

NEW APACHE 2004

AGRICULTURAL PRODUCTS



SUCTION HOSE

PVC SLUDGE SUCTION HOSE – LOW TEMP (GRAY/GREEN)



ASSEMBLIES

CPLD. M X F ALUM SHORT SHANK W/BAND-IT CLAMPS

Apache ^{P/N}	I.D. x Length	Wt. ^{Ea.}	Apache ^{P/N}	I.D. x Length	Wt. ^{Ea.}
98127000	2" x 20'	15.0#	98127003	4" x 20'	43.0#
98127002	3" x 20'	27.5#	98127005	6" x 20'	80.0#

CPLD. ALUM C X E CAM & GROOVE W/BAND-IT CLAMPS

Apache ^{P/N}	I.D. x Length	Wt. ^{Ea.}	Apache ^{P/N}	I.D. x Length	Wt. ^{Ea.}
98127007	2" x 20'	16.0#	98127010	4" x 20'	80.0#
98127009	3" x 20'	28.5#	98127011	6" x 20'	85.5#

CPLD. ALUM C X PLATED STEEL NIPPLE W/BAND-IT CLAMPS

Apache ^{P/N}	I.D. x Length	Wt. ^{Ea.}	Apache ^{P/N}	I.D. x Length	Wt. ^{Ea.}
98127013	2" x 20'	16.5#	98127016	4" x 20'	43.5#
98127015	3" x 20'	29.0#	98127018	6" x 20'	91.5 #

BULK HOSE

Apache ^{P/N}	I.D. x O.D.	Std. Length	MBR	W.P.	Wt. ^{100'}
12026115	1-1/2" x 1.80"	100'	2.7"	70#	47#
12026116	2" x 2.40"	100'	3.5"	70#	68#
12026118	3" x 3.45"	100'	5.0"	55#	114#
12026119	4" x 4.55"	100'	7.0"	45#	174#
12026120	6" x 6.60"	20'/25'/30'	10.0"	35#	322#

Applications: A low temp PVC suction and discharge hose for water, light chemicals, and sludge pumping service in the construction, rental, marine, agricultural, and irrigation industries.

Construction: A smooth bore hose for maximum flow with a pvc helix for increased flexibility and abrasion resistance.

Temp. Range: -15°F to 140°F (under static conditions).

W.P. and M.B.R.: Applicable @ 68°F.

Max. Length Bulk: 100'.

Assemblies in Other Lengths Available Upon Request.

WARNING: For Undiluted Chemicals, Contact Apache for Hose Recommendations.

HEAVY DUTY LAY FLAT DISCHARGE

ASSEMBLIES

CPLD. SHORT SHANK W/BAND-IT CLAMPS

<u>Apache^{PN}</u>	<u>I.D. x Length</u>	<u>Wt. Ea.</u>	<u>Apache^{PN}</u>	<u>I.D. x Length</u>	<u>Wt. Ea.</u>
98138376	4" x 50'	68.0#	98138377	4" x 100'	130.0#
98138379	6" x 50'	105.0#	98138380	6" x 100'	199.0#

CPLD. ALUM C X E CAM & GROOVE W/BAND-IT CLAMPS

<u>Apache^{PN}</u>	<u>I.D. x Length</u>	<u>Wt. Ea.</u>	<u>Apache^{PN}</u>	<u>I.D. x Length</u>	<u>Wt. Ea.</u>
98138394	4" x 50'	69.0#	98138395	4" x 100'	131.0#
98138397	6" x 50'	110.0#	98138398	6" x 100'	204.0#
98138400	8" x 50'	149.0#	98138401	8" x 100'	276.5#

CPLD. BALL & SOCKET W/BAND-IT CLAMPS

<u>Apache^{PN}</u>	<u>I.D. x Length</u>	<u>Wt. Ea.</u>	<u>Apache^{PN}</u>	<u>I.D. x Length</u>	<u>Wt. Ea.</u>
98138403	4" x 50'	75.0#	98138404	4" x 100'	137.0#
98138406	6" x 50'	118.0#	98138407	6" x 100'	212.0#
98138409	8" x 50'	169.0#	98138410	8" x 100'	297.0#



BULK HOSE

<u>Apache^{PN}</u>	<u>I.D. x Length</u>	<u>P.S.I. Test</u>	<u>Wt. Ft.</u>
13030323	4" x 100'	200#	1.24#
13030327	6" x 100'	200#	1.88#
13030330	8" x 100'	150#	2.55#

Applications: Designed for the toughest discharge applications in construction, mining, jetting, and agriculture.
Construction: Black rubber and PVC compounds with a heavy wall polyester cord reinforcement to provide the ultimate in heavy duty discharge hose.

Features: Heavy duty, non water-absorbing and mildew proof hose that rolls up flat for easy storage and movement.

MILL WASH DOWN/DISCHARGE HOSE



ASSEMBLIES

CPLD. M X F ALUM SHORT SHANK W/BAND-IT CLAMPS

<u>Apache^{PN}</u>	<u>I.D. x Length</u>	<u>Wt. Ea.</u>	<u>Apache^{PN}</u>	<u>I.D. x Length</u>	<u>Wt. Ea.</u>
98168078	1-1/2" x 25'	6.0#	98168080	1-1/2" x 50'	11.0#
98168085	2" x 25'	7.0#	98168090	2" x 50'	13.0#
98168095	2-1/2" x 25'	11.0#	98168097	2-1/2" x 50'	19.5#
98168098	3" x 25'	14.5#	98168100	3" x 50'	25.0#
98168108	4" x 25'	26.0#	98168110	4" x 50'	46.0#

CPLD. ALUM C X E CAM & GROOVE W/BAND-IT CLAMPS

<u>Apache^{PN}</u>	<u>I.D. x Length</u>	<u>Wt. Ea.</u>	<u>Apache^{PN}</u>	<u>I.D. x Length</u>	<u>Wt. Ea.</u>
98168196	1-1/2" x 25'	7.0#	98168197	1-1/2" x 50'	12.0#
98168199	2" x 25'	8.0#	98168200	2" x 50'	14.0#
98168205	2-1/2" x 25'	12.0#	98168210	2-1/2" x 50'	21.5#
98168220	3" x 25'	15.0#	98168225	3" x 50'	25.5#
98168245	4" x 25'	26.5#	98168250	4" x 50'	46.5#



BULK HOSE

<u>Apache^{PN}</u>	<u>I.D.</u>	<u>P.S.I. Test</u>	<u>Wt. Ft.</u>	<u>Apache^{PN}</u>	<u>I.D.</u>	<u>P.S.I. Test</u>	<u>Wt. Ft.</u>
16000500	1-1/2"	250#	.20#	16001503	3"	250#	.42#
16000507	2"	250#	.23#	16002003	4"	250#	.80#
16001007	2-1/2"	250#	.34#	16002006	6"	250#	1.50#

Applications: A lightweight, easy-to-handle general purpose hose for cleanup and wash down in factories and mill yards. An ideal contractors/industrial discharge hose.

Construction: Single jacket, 100% polyester construction will not mildew or decay with age. Lining is weather resistant extruded synthetic rubber.

Assemblies: Coupled assembly prices include male and female pipe thread short shank couplings with Band-It smooth I.D. clamps.

Clamps: 1-1/2" and 2" I.D. assemblies include one clamp on each end, 2-1/2" and 4" I.D. assemblies include two clamps on each end and the 6" I.D. assemblies include three clamps on each end.

Std. Lengths: Bulk 50', 100' available by special order.

SMART HOSE



WHAT IS IT

The "Smart Hose Safety" system will shut off the flow of product conveyed in both directions instantly in the event of a hose coupling ejection, hose stretching to an unsafe condition, or hose separation.

FEATURES

- Maintenance Free
- User Friendly
- Simplicity - No training necessary and no maintenance required. It always works and Smart Hose technology lowers maintenance costs as compared to expensive valves and secondary containment concepts.
- History - Over 300,000 hoses using this technology are in service.

HOW DOES IT WORK

Smart Hose incorporates a coated cable within the hose bore that is connected to the valve plungers, wedges or flappers. This cable acts as a compression spring providing thrust in the direction of both ends of the hose holding the valves open. Should this thrust be eliminated due to coupling ejection, hose stretching, or hose separating, the valves release and instantly seat, stopping the flow in both directions.



LPG - DOT ASSEMBLIES

Apache ^{PN}	I.D. x Length	Wt. ^{ea.}
11036010	1-1/4" x 19'	30.0#
11037050	2" x 18.5'	46.0#

Applications: For the transfer of LPG in bulk storage tanks and bulk truck service. UL-21 approved. Lifeline safety system attached. Each assembly is tested and certified to DOT requirements, test certificate is enclosed with each hose.

Construction: 350 psi, oil resistant, withstands petroleum gas penetration. High strength textile reinforcement, abrasion and weather resistant compound. Coupled female npt.

Temp. Range: -40°F to 180°F

Other I.D. / Lengths Available: 1"-3" I.D. Textile Reinforced and 1"-4" I.D. SS Metal Hose.



NH3 - DOT ASSEMBLIES (TEXTILE REINFORCED)

Apache ^{PN}	I.D. x Length	Wt. ^{ea.}
11035509	1-1/4" x 19'	30.0#
11035650	2" x 18.5'	46.0#

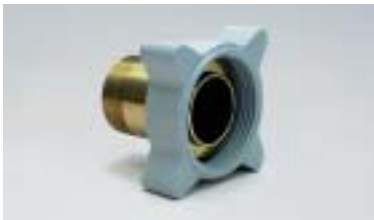
Applications: For the transfer of NH3 in bulk storage tanks and bulk truck services. Each assembly is tested under water to test pressure.

Construction: 350 psi, Low permeation rubber compound reinforced with high strength nylon textile. Abrasion and weather resistant compound. Coupled female npt.

Temp. Range: -40°F to 180°F

Other I.D. / Lengths Available: 1"-2" I.D. Textile Reinforced

Note: Smart Hose recommends the use of spiral wear sleeve to prolong hose life.



HOSE CONNECTIONS - BRASS/STEEL

Apache ^{PN}	Description	Wt. ^{ea.}
39045014	1-1/4" Brass LPG	1.9#
39045012	1-1/4" Steel NH3	1.8#
39045024	2" Brass LPG	4.2#
39045022	2" Steel NH3	3.9#

Vapor Line Filler Couplings: Female ACME x MPT



YELLOW PLASTIC DUST PLUG W / RING AND CHAIN

Apache ^{PN}	Description	Wt. ^{ea.}
39045074	1-1/4" ACME	1.5 oz.
39045080	2" ACME	4.1oz.

Spiral wear sleeve is available for all hose. Protective wrapping is the perfect outside hose protection for transport hose to resist the effects of abrasion, (due to pump vibration) cutting, and gouging. Also Available in 1".

PRO SPRAYER HOSE-WAND KITS



KITS

<u>Apache^{PN}</u>	<u>I.D. x Length</u>	<u>W.P.</u>	<u>Wt.^{Ea.}</u>
15026215	3/8" x 15' Hose w/Wand	80 PSI	1.7#
15026225	3/8" x 25' Hose w/Wand	80 PSI	2.0#

Applications: For use with tank sprayers, hand pump sprayers, faucets or hydrants. Can be used to apply sealers, cleaners, insecticides, and herbicides.

Construction: Chemical resistant polyurethane hose with reusable male x female garden hose couplings. Transparent coil hose is also weather, oil, and abrasion resistant. Durable steel tube wand features an adjustable brass spray nozzle and easy on/off thumb control built into the cushion grip handle. Includes a heavy duty solid brass 3/8" MNPT x male garden hose thread adapter.

Benefits: Both the adapter and reusable ends allow hose to be connected to different styles of sprayers. Lightweight and easy to operate. Handles working pressures up to 80 lbs.

TUBING

WEED SPRAY TUBING



BULK

<u>Apache^{PN}</u>	<u>I.D. x Wall</u>	<u>Length</u>	<u>Wt.^{100'}</u>
15010070	3/8" x 5/64"	500' Coil	3.3#
15010071	1/2" x 5/64"	500' Coil	6.5#

Applications: Used in agricultural and horticultural weed spray control. Handles common herbicides and insecticide solutions.

Construction: Natural nylon tubing.

Features: Resists hydrocarbon deposit build-up, offers excellent flexibility and kink resistance, good resistance to vacuum collapse. Lightweight for easy handling.

EVA TUBING (BLACK)



BULK

<u>Apache^{PN}</u>	<u>I.D. x Wall</u>	<u>Length</u>	<u>Wt.^{100'}</u>
15016007	3/8" x 1/8"	500' Reel	5.6#

Applications: Used in agricultural, lawn and chemical transfer. Handles common herbicides and insecticide solutions, including Monsanto's Lasso®. Used for the application of anhydrous ammonia, aqua ammonia, phosphates and all liquid fertilizers.

Construction: Ethyl vinyl acetate plastic tubing.

Features: Good chemical and weather resistance. Black tubing has higher ozone resistance than standard eva tubing.

Warning: Not for transfer of anhydrous ammonia under pressure. Recommended for open end discharge only.

REINFORCED CLEAR VINYL TUBING 150# INDUSTRIAL GRADE



BULK

<u>Apache^{PN}</u>	<u>I.D. x O.D.</u>	<u>Length</u>	<u>W.P.</u>	<u>Wt.^{100'}</u>
15005646	1/4" x .438"	300' Coil	150#	5.6#
15005648	3/8" x .594"	300' Coil	150#	9.2#
15005650	1/2" x .750"	300' Coil	150#	13.5#

Applications: Use when a clear hose needing higher working pressures and reinforcement is required. Good for applications such as air, water, and pneumatic lines.

Construction: Profile formulated to comply with FDA requirements. Clear polyvinyl chloride reinforced with a synthetic cord.

Temp. Range: -20°F to 150°F (higher temperatures, lower working pressures).

Recommended Couplings: Standard shank fittings with ferrules or clamps, normally used on rubber hoses.

WARNING: NOT FOR TRANSFER OF ANHYDROUS AMMONIA.

SELF STORING AIR HOSE



REINFORCED POLYURETHANE-W/2 MALE SWIVELS

Apache ^{PN}	I.D. x Length	Color	W.P.	Wt. Ea.
15026100	1/4" x 25'	Blue	250#	.90#
15026102	1/4" x 50'	Blue	250#	1.50#
15026106	3/8" x 25'	Red	250#	2.25#
15026108	3/8" x 50'	Red	250#	3.25#

Assemblies: Reinforced polyurethane assemblies have the same superior features of the polyurethane self coiling assemblies plus a higher working pressure.

REINFORCED POLYURETHANE ROOFING/FRAMING HOSE



ASSEMBLIES

Apache ^{PN}	I.D. x Length	Color	W.P.	Wt. Ea.
15026302	1/4" x 50'	Trans. Blue	200#	2.0#
15026303	1/4" x 100'	Trans. Blue	200#	4.3#
15026305	3/8" x 50'	Trans. Red	200#	2.3#
15026307	3/8" x 100'	Trans. Red	200#	5.0#

Applications: For use with air compressors, staplers, nailers, and pneumatic tools. Lightweight and superior flexibility make this the perfect hose for roofing, framing, and trim work.

Assemblies: Hose is coupled 1/4" MPT swivel w/bend restrictors on each end.

Features: Two spiral fabric reinforcement with UV stabilization for longer outdoor service.

It is heat, oil, weather, and abrasion resistant, stays flexible at sub zero temperatures and has an excellent temperature range.

Packaged: Skin packed coil with point of purchase color label for convenient retail sale.

HOSE ACCESSORIES

T-BOLT CLAMPS



"ULTRA" CLAMP - STAINLESS STEEL BAND AND BOLT

Apache ^{PN}	O.D. Range ^{Apprx.}	Banjo# ^{Equivalent}	Nominal I.D. ^{Apprx.}	Qty. ^{Pkg.}	Wt. Ea.
43082000	1-5/8" - 1-13/16"	162	1-3/4"	10	.119
43082002	1-3/4" - 1-15/16"	181	1-7/8"	10	.125
43082004	1-7/8" - 2-1/16"	193	2"	10	.125
43082008	2-1/4" - 2-7/16"	218	2-3/8"	10	.134
43082012	2-11/32" - 2-5/8"	231	2-9/16"	10	.125
43082016	2-17/32" - 2-13/16"	250	2-3/4"	10	.125
43082020	2-29/32" - 3-3/16"	287	3-1/8"	10	.197
43082024	3-9/32" - 3-9/16"	331	3-1/2"	10	.188
43082026	3-17/32" - 3-13/16"	343	3-3/4"	10	.188
43082030	4-9/32" - 4-9/16"	425	4-1/2"	10	.188
43082032	4-17/32" - 4-13/16"	456	4-3/4"	10	.188

Features: All stainless steel construction. T-bolt is threaded the entire length to allow maximum range of size and tension. Clamp will handle high torque, creating even sealing pressure around coupling shank. Includes nylon locking nut. Sold in bags of ten each.

Note: Due to possible fluctuations in hose o.d., each individual installation should be checked.

BAND-IT CLAMPS



CENTER PUNCH PREFORMED CLAMPS - STAINLESS STEEL

Apache ^{PN}	Clamp I.D.	MFG#	Band Width	Qty. ^{Bx.}	Wt. Bx.
40039625	13/16"	CP3S	3/8"	100	3.6
40039627	1-3/8"	CP311S	3/8"	100	4.6
40039629	1-1/2"	CP6S	5/8"	100	9.7
40039631	2"	CP8S	5/8"	100	11.5
40039634	2-3/4"	CP11S	5/8"	50	7.3
40039637	3-1/2"	CP14S	5/8"	50	8.7
40039639	4"	CP16S	5/8"	25	4.9
40039642	5"	CP20S	5/8"	25	5.9
40039645	7"	CP28S	5/8"	25	7.4

Applications: Used to attach pin-lug couplings, kc nipples, cam and groove couplers, ball and socket couplers, and hose menders.

Construction: High strength stainless steel for maximum locking strength, with better resistance to corrosion than galvanized steel. Use Band-It® T300 or S38 center punch tool to install.

BAND-IT® JR. CLAMPS



SMOOTH I.D. PREFORMED CLAMPS – STAINLESS STEEL

Apache ^{PN}	Clamp I.D.	MFG#	Band Width	Qty. ^{Bx.}	Wt. ^{Bx.}
40029073	13/16"	JS201	3/8"	100	3.6
40029039	1-3/8"	JS202	3/8"	100	5.0
40029045	1-1/2"	JS205	5/8"	100	10.4
40029047	2"	JS207	5/8"	100	12.2
40029050	2-3/4"	JS210	3/4"	50	9.2
40029052	3-1/2"	JS212	3/4"	50	10.8
40029053	4"	JS213	3/4"	25	6.1
40029068	5"	JS215	3/4"	25	7.2
40029080	8"	JS219	3/4"	25	11.0

Applications: Used to attach pin-lug couplings, kc nipples, cam and groove couplers, ball and socket couplers, and hose menders.

Construction: High strength stainless steel for maximum locking strength, with better resistance to corrosion than galvanized steel. Use Band-It C001 or J001 Pok-It II tool to install.

BAND-IT BUCKLES & TOOLS



BANDS – GALVANIZED CARBON STEEL

Apache ^{PN}	Width	MFG#	Roll	Wt. ^{Bx.}
40003002	3/8"	(C303)	100'	3.3#
40003509	1/2"	(C304)	100'	5.1#
40004009	5/8"	(C305)	100'	6.4#
40004505	3/4"	(C306)	100'	7.7#

Applications: Use for securing signs, cable bundling, pipe insulation, hose couplings, and a variety of other uses which do not require the bands to be of high strength or provide corrosion resistance.



BUCKLES – GALVANIZED CARBON STEEL

Apache ^{PN}	Width	MFG#	Qty. ^{Bx.}	Wt. ^{Bx.}
40008004	3/8"	(C353)	100	.8#
40008500	1/2"	(C354)	100	2.1#
40009000	5/8"	(C355)	100	2.4#
40009507	3/4"	(C356)	100	3.7#

Applications: Use with galvanized banding. Buckles are designed to accommodate both single/double wraps of banding. Unique teeth and ear design provide maximum clamping strength. Apply with C001 banding tool.



BANDS – 201 STAINLESS STEEL

Apache ^{PN}	Width	MFG#	Roll	Wt. ^{Bx.}
40000518	3/8"	(C203)	100'	3.2#
40001018	1/2"	(C204)	100'	5.1#
40001506	5/8"	(C205)	100'	6.4#
40002006	3/4"	(C206)	100'	7.7#

Applications: Use where high strength and corrosion resistant banding is required. Bands have superior yield and tensile strength properties for maximum clamping strength. Imprinting on band eliminates costly waste and complicated measuring by allowing users to quickly and precisely roll out the exact length of banding needed.



BUCKLES – 201 STAINLESS STEEL

Apache ^{PN}	Width	MFG#	Qty. ^{Bx.}	Wt. ^{Bx.}
40005501	3/8"	(C253)	100	.8#
40006001	1/2"	(C254)	100	2.1#
40006508	5/8"	(C255)	100	2.4#
40007008	3/4"	(C256)	100	3.7#

Applications: Use with bulk stainless steel banding. Buckles are designed to accommodate both single/double wraps of banding. Unique teeth/ear design provide maximum clamping strength. Apply with C001 banding tool.



BAND-IT® TOOL

Apache ^{PN}	Description	Wt. ^{Ea.}
40047018	C001 Banding Tool	4.40#

Applications: Used to apply Band-it bands/buckles. Apply preformed jr. smooth I.d. clamps with J001 adapter.

Construction: Drop forged steel Band-It tool has a tensioning capability of +2,400# (includes built in band cutter).

Note: Band-It® steel hose nipples also available.

Price and Availability Upon Request.

BAND-IT® JR. SMOOTH I.D. CLAMPS & TOOLS



BAND-IT® JR. TOOLS

Apache ^{PN}	Description	Wt. ^{Ea.}
40048502	J001 Band-It® Jr. Adapter – for C001 Tool	1.44#

DUCTING



GPE - BULK HOSE

<u>Apache^{PN}</u>	<u>I.D.</u>	<u>Std. Length</u>	<u>Wt. Ft.</u>
14010313	2-1/2"	50'	.24#
14010314	3"	50'	.30#
14010315	4"	50'	.40#

Application: Suited for low pressure air movement and fume extraction applications like insulation blowing, dust collection and use as bilge pump hose. Excellent for light vacuum applications.

Construction: Very flexible and lightweight polyethylene.

HT - BULK HOSE

<u>Apache^{PN}</u>	<u>I.D.</u>	<u>Std. Length</u>	<u>Wt. Ft.</u>
14050218	4"	25'/50'	.72#
14050222	6"	25'/50'	1.05#
14050224	8"	25'/50'	1.40#

Application: Suitable for more demanding positive and negative pressure applications like lawn/leaf/dust collection, straw blowing, fertilizer broadcasting, powder/ bulk and material handling.

Construction: Resistant to abrasion, ozone, uv rays, chemicals and weathering. Very flexible and lightweight hose with true rubber like qualities and steel wire helix reinforcement.

MANUAL (GRAVITY FLOW) FUEL NOZZLES



MANUAL NOZZLE

<u>Apache^{PN}</u>	<u>Description</u>	<u>Wt. Ea.</u>
99000243	1" FNPT w 3/4" FNPT Adapter	1.6#

Application: Designed for fueling off-road and farm equipment from a gravity flow tank. For use with gasoline, kerosene, diesel, and most petroleum based products.

Construction: 1" female NPT inlet includes a 3/4" female reducer adapter. Light weight aluminum body, full flow nozzle shuts-off with minimal line shock.

CURB PUMP HOSE



SOFT WALL CPLD MXM - ASSEMBLIES

<u>Apache^{PN}</u>	<u>Description</u>	<u>W.P.</u>	<u>Wt. Ea.</u>	<u>Apache^{PN}</u>	<u>Description</u>	<u>W.P.</u>	<u>Wt. Ea.</u>
98108610	3/4" x 10'	200#	4.0#	98108646	1" x 10'	150#	7.2#
98108620	3/4" x 12'	200#	4.6#	98108648	1" x 12'	150#	7.5#
98108635	3/4" x 15'	200#	5.6#	98108650	1" x 15'	150#	10.3#
98108638	3/4" x 16'	200#	6.0#	98108652	1" x 16'	150#	10.9#
98108643	3/4" x 18'	200#	6.5#	98108656	1" x 18'	150#	12.2#

Application: Designed for curb pump self serve stations and highly sensitive electronic fuel pumps.

Construction: Tube is NBR reinforced with a spiral polyester cord. Cover is oil and weather resistant.

Assemblies: Coupled with male MPT internally expanded fittings that are capped to protect the threads. All assemblies are tested for static conductivity.

HARD WALL CPLD MXM - ASSEMBLIES

<u>Apache^{PN}</u>	<u>Description</u>	<u>W.P.</u>	<u>Wt. Ea.</u>	<u>Apache^{PN}</u>	<u>Description</u>	<u>W.P.</u>	<u>Wt. Ea.</u>
98108675	3/4" x 10'	250#	5.2#	98108711	1" x 10'	150#	7.9#
98108685	3/4" x 12'	250#	6.0#	98108712	1" x 12'	150#	9.3#
98108695	3/4" x 15'	250#	7.4#	98108713	1" x 15'	150#	11.4#
98108703	3/4" x 16'	250#	7.8#	98108715	1" x 16'	150#	12.1#
98108710	3/4" x 18'	250#	8.7#	98108718	1" x 18'	150#	13.4#

Application: Designed for curb pump self serve stations and highly sensitive electronic fuel pumps.

Construction: Tube is NBR reinforced with one-wire braid. Cover is oil and weather resistant.

Assemblies: Coupled with male MPT internally expanded fittings that are capped to protect the threads. All assemblies are tested for static conductivity.

AUTO SHUT-OFF FUEL NOZZLES



AUTO SHUT-OFF NOZZLES

<u>Apache^{PN}</u>	<u>Description</u>	<u>Wt. Ea.</u>
99000246	3/4" FNPT - Unleaded Nozzle	2.6#
99000247	1" x FNPT - Diesel Nozzle	3.5#

Application: Designed for fuel applications requiring an auto shut-off. For use with gasoline, 15% ethanol, methanol and gasoline blends, and diesel fuel.

Construction: Inlet; 3/4" female NPT (unleaded) and 1" female NPT (diesel). Hold-open handle clip for fast, effortless filling. Small, trim, and lightweight with a low profile aluminum body and a full hand insulator that protects the nozzle and vehicle, and insulates hand when in use.

Features: 15 PSI is required to operate auto shut-off. Nozzle shuts down at three gallons per minute.

PRESSURE WASHER PRODUCTS

PRESSURE WASHER HOSE REELS (HAND CRANK)



METAL HOSE REEL

Apache ^{PN}	Description	Wt. Ea
99023586	50' (3/8") 3500 PSI Hose Reel (hose sold separately)	9.5#
99023587	100' (3/8") 3500 PSI Hose Reel (hose sold separately)	12.0#

Applications: Convenient way to store hose on pressure washer. Reel fits most carts and includes mounting bracket. Rated up to 3500# PSI.
Construction: Solid steel construction with durable powder coat paint and full flow brass swivel outlet.
Installation: Easy to assemble, versatile mounting brackets bolt to cart handle.
Includes: 5' - Female M22 x 3/8" MPT pump to reel connector hose.
Inlet/Outlet: 3/8" FNPT

3000# PRESSURE WASHER HOSE



ASSEMBLIES - CPLD. 3/8" MALE X MALE SWIVEL

Apache ^{PN}	Description	Color	W.P.	Wt. Ea
98388085	3/8" I.D. x 50'	Black	3000#	11.9#
98388095	3/8" I.D. x 100'	Black	3000#	24.0#

Application: Use as a replacement hose or as an extension of an existing hose. For use on hot/cold water high pressure cleaning equipment where heavy duty service is required.
Assemblies: 3000# PSI, high tensile steel, one wire braid hose, coupled male solid x male swivel with one bend restrictor.
Temp. Range: Laboratory tested for normal service from -40°F to 200°F (-40°C to 93°C).
Also Available: Blue non-marking cover assemblies
Other Lengths and Sizes Available Upon Request.
WARNING: Not For Steam Service.

4000# PRESSURE WASHER HOSE



ASSEMBLIES

Apache ^{PN}	Description - Cpld.	Color	W.P.	Wt. Ea
10085570	3/8" I.D. x 50' 3/8" M x M Swivel	Black	4000#	12.6#

Application: Use as a replacement hose or as an extension of an existing hose. For use on hot/cold water high pressure cleaning equipment where heavy duty service is required.
Assemblies: 4000# PSI, high tensile steel, two wire braid hose with two bend restrictors.
Temp. Range: Laboratory tested for normal service from -40°F to 250°F (-40°C to 120°C).
Other Lengths and Sizes Available Upon Request.
WARNING: Not For Steam Service.

THREADED LANCES (WANDS)



PLATED STEEL (INSULATED GRIP) WAND

Apache ^{PN}	Length	Threads	W.P.	Wt. Ea
99023687	36" w/handle	1/4" MNPT	3600#	1.9#
99023688	59" w/handle	1/4" MNPT	3600#	2.8#

Applications: Use 1/4" MNPT zinc plated wand as a replacement or extension for original wand. Molded grip insulates operator from heat when using hot water, and increases control and comfort when operating a pressure washer for extended periods of time.
Installation: Wand threads directly into outlet of gun, quick disconnect couplers can also be used for quick/easy connection of wand and accessories.
Note: These wands have a molded insulated grip. Other sizes available, bare or insulated.
WARNING: Under no circumstances point spray guns at humans or animals. Serious injury can result from the high pressure discharge produced by pressure washers.

PRESSURE WASHER SPRAY GUNS



UNIVERSAL "NO WEEP" SPRAY GUN

Apache ^{PN}	Inlet-Outlet	W.P.	Temp.	G.P.M.	Wt. Ea
99023487-c	3/8" x 1/4" FNPT	4000#	300°F	7.0	1.07#
99023462-c	3/8" x 1/4" FNPT	4500#	300°F	8.0	1.24#

Applications: Use as a replacement for original gun on pressure washers. Gun outlet accepts 1/4" MNPT wands and attachments.
Installation: Connect pressure washer hose to inlet on gun. Thread wand into 1/4" FNPT outlet. To remove, turn pressure washer off, pull trigger on gun to release water pressure, then disconnect.
Features: Safety lock on trigger reduces chance of accidental discharge.
Note: Additional adapter may be required to complete the inlet connection, depending on your configuration. Use Teflon pipe tape on MPT threads to ensure a leak-free connection.
WARNING: Under no circumstances point spray guns at humans or animals. Serious injury can result from the high pressure discharge produced by pressure washers.