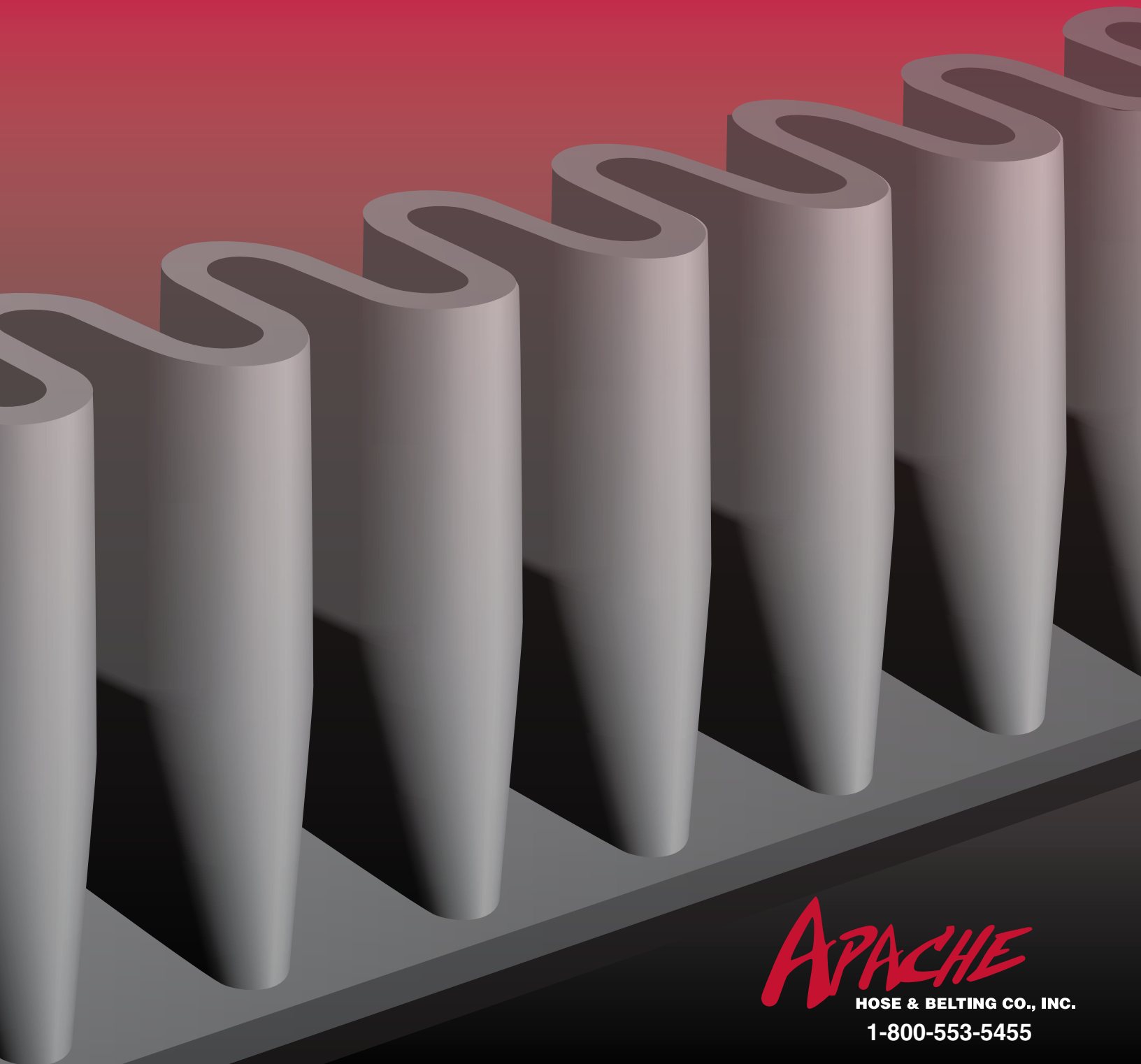


DUROWALL™



APACHE

HOSE & BELTING CO., INC.

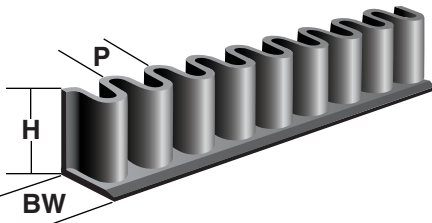
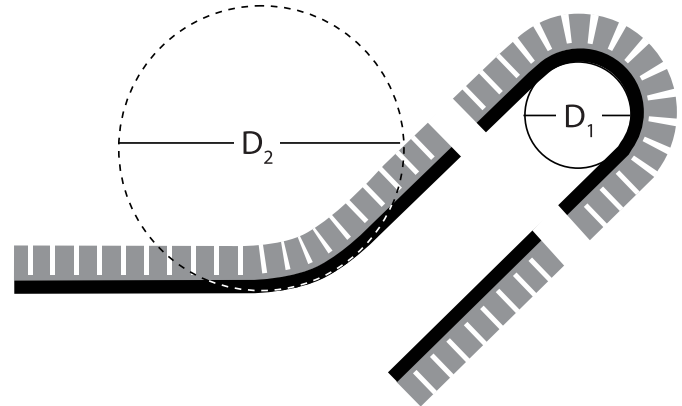
1-800-553-5455

DUROWALL™

Corrugated Sidewalls

Durowall offers sidewalls from 1" to 12" high, as well as metric heights. Durowall corrugated sidewalls come in a variety of compounds to best suit your application needs.

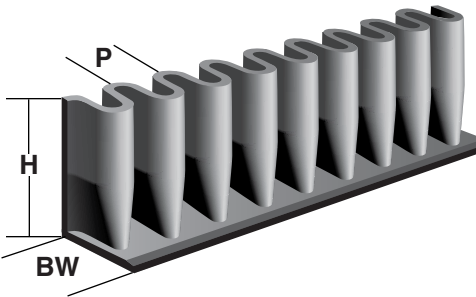
All corrugated sidewalls have high tensile strength properties for added flexibility and toughness, in order to withstand cutting, tearing, and abrasion. Fabric reinforced sidewalls are available for sidewalls that are 6" and higher. This feature provides additional strength and tear resistance.



Durowall Corrugated Sidewalls

Add 25% to min. pulley diameter for other than Black Standard

Height (H)	Base Width (BW)	Pitch (P)	Weight Per Foot/Lbs.	Cleat Height (Recommended)	D1 Min. Pulley Dia.	D2 Min. Deflection Dia.
1"	1-1/2"	1"	.30	—	2"	8"
1-1/2"	1-1/2"	1"	.45	1"	3"	8"
2"	1-1/2"	1"	.60	1-1/2"	3"	8"

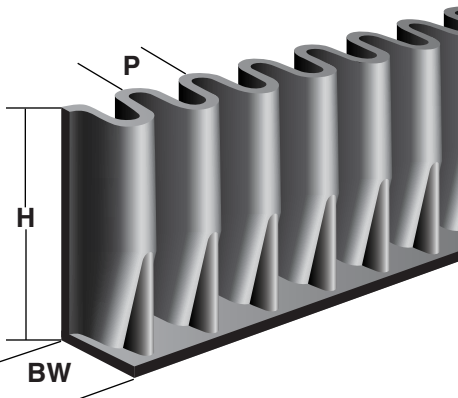


Durowall Corrugated Sidewalls

Add 25% to min. pulley diameter for other than Black Standard

Height (H)	Base Width (BW)	Pitch (P)	Weight Per Foot/Lbs.	Cleat Height (Recommended)	D1 Min. Pulley Dia.	D2 Min. Deflection Dia.
2"	2"	1-5/8"	.80	1-1/2"	6"	10"
2-1/2"	2"	1-5/8"	.95	2"	6"	12"
3"	2"	1-5/8"	1.10	2-1/2"	8"	16"
4"	2"	1-5/8"	1.40	3-1/2"	10"	18"
5"	2"	1-5/8"	1.75	4-1/2"	12"	20"
6"	2"	1-5/8"	2.20	5-1/2"	14"	24"

Any height available between 2" high and 6" high



Durowall Fabric Reinforced Corrugated Sidewalls

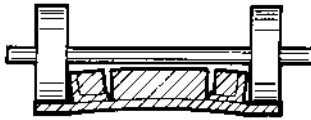
Add 25% to min. pulley diameter for other than Black Standard

Height (H)	Base Width (BW)	Pitch (P)	Weight Per Foot/Lbs.	Cleat Height (Recommended)	D1 Min. Pulley Dia.	D2 Min. Deflection Dia.
6"	3"	2-13/32"	3.0	5-1/2"	14"	24"
8"	3"	2-13/32"	4.3	7"	16"	32"
10"	3"	2-13/32"	5.5	9"	20"	40"
12"	3"	2-13/32"	6.8	11"	24"	48"

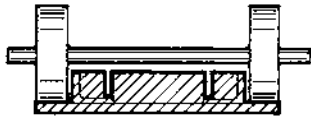
Cross Rigid Base Belting

Durowall's cross rigid belting is specifically designed to provide lateral stiffness and eliminate belt bowing and cupping at directional change points on the conveyor. This feature also helps to reduce belt sag on the return run.

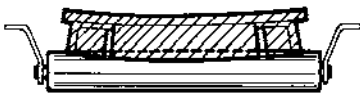
Although the belt is rigid in the transverse direction, it remains flexible in the longitudinal direction. This unique design allows the belt to operate on standard pulleys and not interfere with the conveyor structure.



Conventional Belting Carrying Side



Cross Rigid Belting Carrying Side



Conventional Belting Return



Cross Rigid Belting Return

Durowall Cross Rigid Conveyor Belt

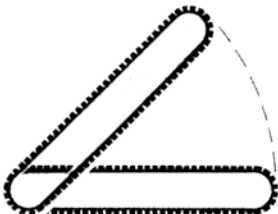
* Style	Total Plies	Tension Plies	P.I.W. Rating	Cross Rigid Plies	Covers**	P.I.W. Weight	O.A.G.	Minimum Pulley Diameter	Color	Mat'l
AXB220	4	2	220	2	1/8" x 1/16"	.295	.465	14	BLK	Rubber
AXB330	5	3	330	2	1/8" x 1/16"	.325	.510	16"	BLK	Rubber
AXB440	6	4	440	2	3/16" x 1/16"	.360	.605	24"	BLK	Rubber
AXB550	7	5	550	2	3/16" x 1/16"	.400	.700	30"	BLK	Rubber
AXB150	2	2	150	2	1/16" x BARE	.14	.25	6"	BLK	Rubber
AXB150	3	3	150	3	1/32" x BARE	.083	.18	3"	BLK	RMV [∞]
AXB150	3	3	150	3	1/32" x BARE	.083	.18	3"	WHT	RMV [∞]
AXB200	4	4	200	4	1/32" x BARE	.14	.22	8"	BLK	RMV [∞]
AXB200	4	4	200	4	1/32" x BARE	.14	.22	8"	WHT	RMV [∞]

* Other styles and cover thicknesses available on special order basis.

** Available Rubber Compounds: Black Standard, Black Oil Resistant, Black static conductive, Black (MSHA) and Black Heat Resistant (400°F).

∞ RMV: Rubber Modified Vinyl

Durowall Belts deflect easily in many directions



Horizontal straight inclined conveyor



"L" shape conveyor



"S" shape conveyor

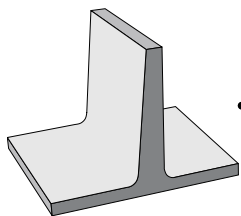
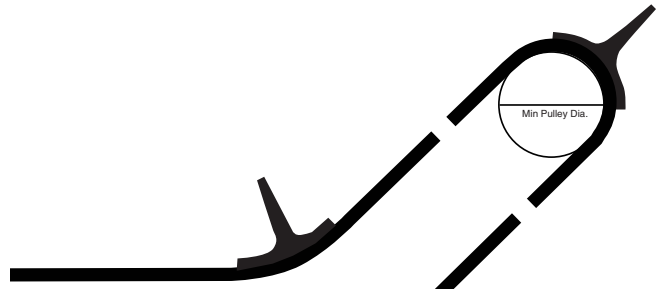


Inclined conveyor with horizontal discharge

DUROWALL™

Durowall Cleats

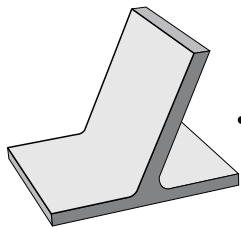
Durowall offers a wide variety of cleating styles and compounds to provide maximum operational efficiency, based on the required capacity and angle of inclination. Both single and 2-piece combination cleats are offered. A number of the larger cleats are fabric reinforced to withstand abuse at loading points. The taller cleats are normally bolted to the sidewalls to provide additional strength and durability.



T-Cleat

Cleat Height	1"	1.5"	2"	2.5"	3"	3.5"	4"	5"	6"
Min. Pulley Dia.	4"	5"	6"	8"	10"	14"	14"	18"	18"

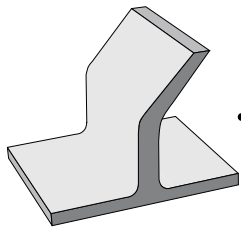
(Add 25% to Min Pulley diameters for special compounds)



C-Cleat

Cleat Height	2"	2.5"	3"	3.5"	4"	4.5"
Min. Pulley Dia.	6"	8"	8"	10"	12"	12"

(Add 25% to Min Pulley diameters for special compounds)

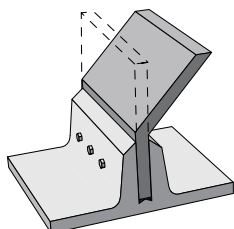


S-Cleat

Larger sizes available on request

Cleat Height	3"	3.5"	4"	4.5"	5"	5.5"	7"	9"
Min. Pulley Dia.	8"	11"	12"	12"	16"	16"	16"	20"

(Add 25% to Min Pulley diameters for special compounds)



Bolted Cleat (S or T) style paddle

Cleat Height	4.5"	5"	5.5"	6"	7"	9"
Min. Pulley Dia.	14"	14"	14"	14"	14"	14"

(Add 25% to Min Pulley diameters for special compounds)

Durowall Design Worksheet

Copies of the data sheet can be used to help determine your belting requirements.
Accurate and complete information is necessary to recommend the proper solution for your application.

Name: _____ Company Name: _____

City/State/Zip: _____

Contact: _____ Phone: _____ Fax: _____

Ref. Info.: _____

Material: _____

Density: _____ Size: _____ Min: _____ Max: _____

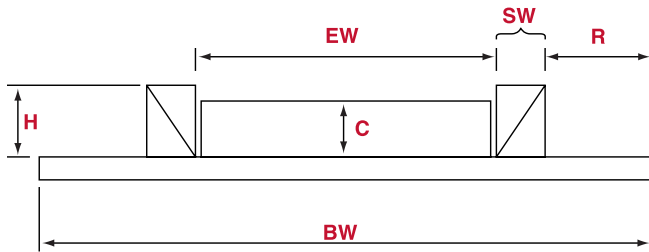
Surcharge: _____ Temperature: _____ Min: _____ Max: _____

Capacity: _____ Belt Speed (check ___ if maximum): _____

Width Preference: _____ Pulley Diameter (check ___ if maximum): _____

Oil Resistance Required? Yes No

Existing belt specifications for replacement parts/pricing



Belt Length _____

Belt Width (BW) _____

Sidewall Height (H) _____

Sidewall Recess (R) _____

Sidewall Width (SW) _____

Effective Width (EW) _____

Cleat Height _____

Belt Type _____

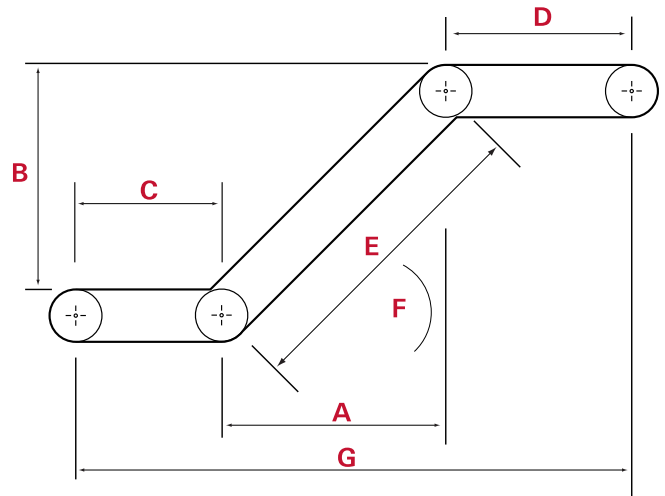
Pulley Dia. _____

Cleat Type _____

Cleat Spacing _____

Cleat Fastened to Wall? _____

Fasteners _____



A Horizontal of Incline _____

B Lift _____

C Infeed/or Horiz. Conv. _____

D Discharge _____

E Incline Length _____

F Incline Angle _____

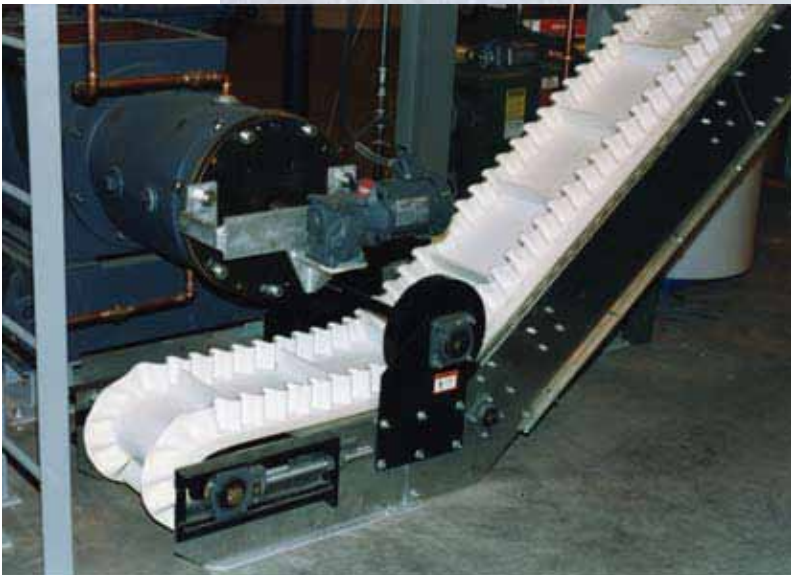
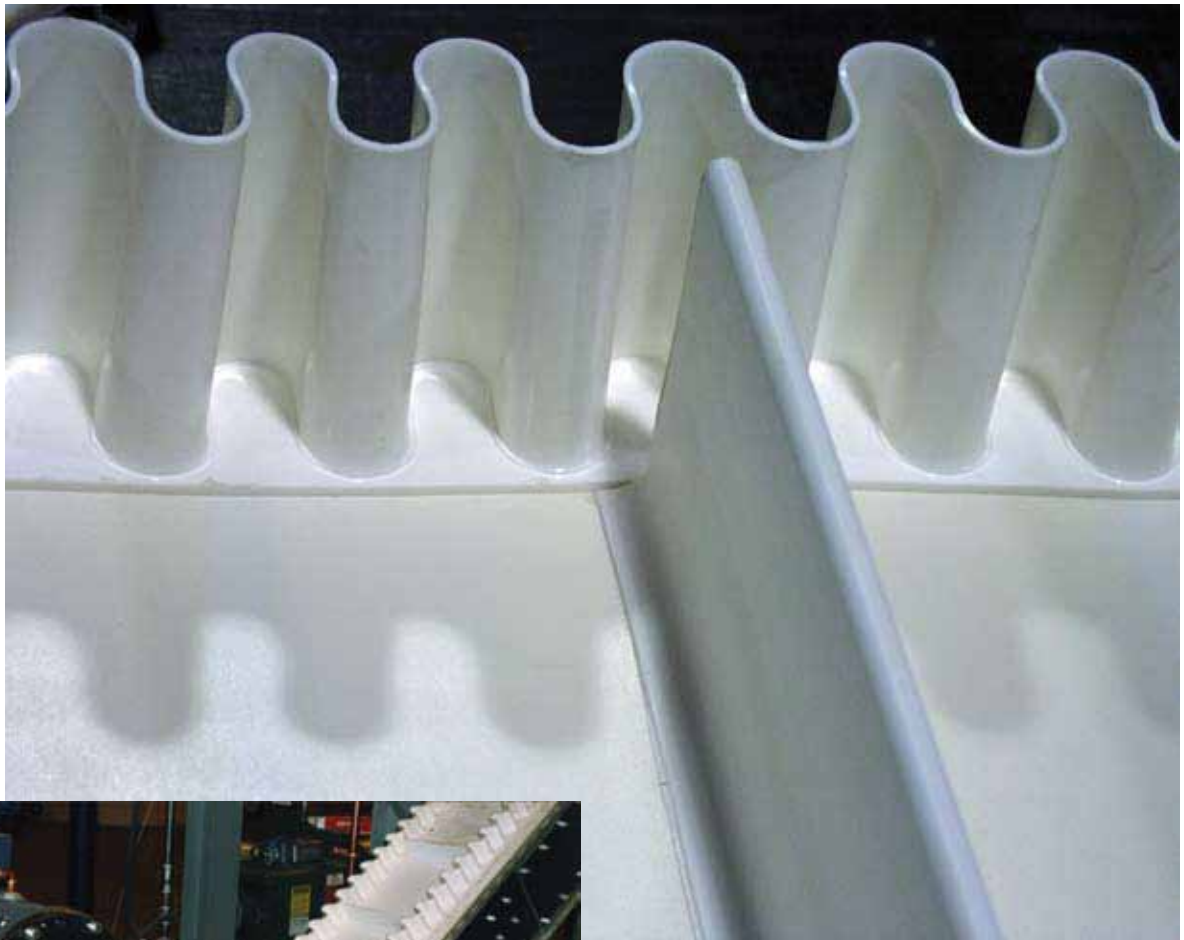
G Horizontal Length _____

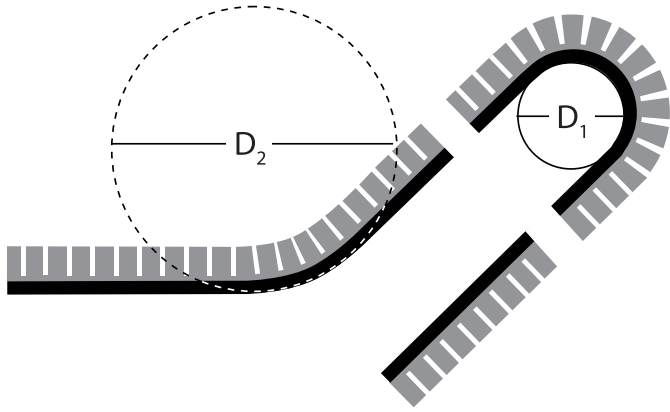
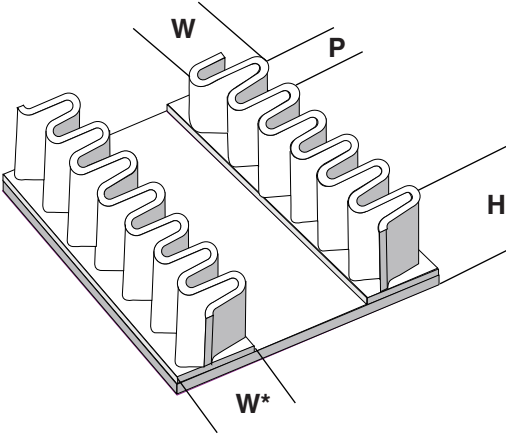


DUROWALL™

White FDA/USDA Durowall

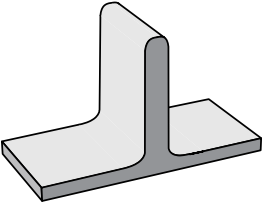
Durowall provides a unique offering of light duty and food grade cleats, sidewalls and cross rigid belting. Our cross rigid belting offers durability, oil resistance and anti-static properties. Popular applications include food processing plants, cereal processors, conveyors, confectioners, and pharmaceutical products.





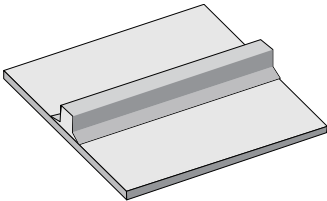
Standard FDA White

Type	H (mm)	W (mm)	W* (mm)	P (mm)	Min. Pulley Diameter D1	Min. Deflection Diameter D2	
1-3/16"	30mm	30	23	33	25.4	Ø3-1/8"	6"
1-5/8"	40mm	40	23	33	25.4	Ø4"	7"
2-3/8"	60mm	60	45	55	50.8	Ø4"	10"
3-1/8"	80mm	80	45	55	50.8	Ø5-1/4"	14"



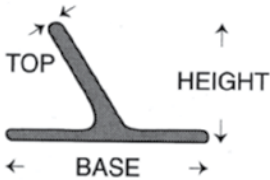
T-Cleat

Cleat Height	1/2"	3/4"	1"	1-1/2"	2"	3"	4"
Min. Pulley Dia.	3"	3"	4"	5"	5"	8"	10"



Square Cleat

Sizes	1/2" x 1/2"	3/4" x 3/4"
Min. Pulley Dia.	4"	6"



Angle Cleats (PVC)

Base	Top	Height	Min. Pulley Dia.
1-3/4"	1/4"	1-1/2"	6"
1-3/4"	1/4"	2"	6"
1-3/4"	1/4"	3"	8"

DUROWALL™



**Call us for details on this
patented cleat design**

CORPORATE HEADQUARTERS

CEDAR RAPIDS, IA

ISO 9001:2008 Certified
Website: www.apachehb.com

NATIONAL SALES GROUP
Toll Free: 800-553-5455
Fax: 319-365-2522

**FOR MORE INFORMATION
ON THESE AND OTHER
PRODUCTS CALL
TOLL FREE:
1-800-553-5455**

REGIONAL SALES AND DISTRIBUTION CENTERS

CEDAR RAPIDS, IA
Toll Free: 800-332-3243

MINNEAPOLIS, MN
Toll Free: 800-328-4149

N. KANSAS CITY, MO
Toll Free: 800-821-5160

CHICAGO, IL
Toll Free: 800-635-4712

WARRANTY

All merchandise designed, manufactured or assembled by Apache is warranted at the time of shipment to be free from defects in the original design, material and manufacture, provided such merchandise is properly installed and used only for the intended purpose and under normal service conditions. Liability with respect to any such merchandise proved defective is limited to buyer's net purchase price or, at Apache's option, the repair or replacement thereof upon its return to Apache freight prepaid. In no event shall Apache be liable to supply or pay for labor, downtime, or any loss or damage, either direct, incidental or consequential. All merchandise supplied by Apache but designed, manufactured and assembled by others shall be accepted by Buyer with only those warranties made by such vendors or manufacturers and in lieu of any additional warranties on the part of Apache.

THIS WARRANTY IS EXPRESSLY MADE IN LIEU OF ANY AND ALL OTHER WARRANTIES, INCLUDING THE WARRANTY OF MERCHANTABILITY AND FITNESS FOR A PARTICULAR PURPOSE.

AP-32 / 112310

100% EMPLOYEE OWNED



PROUD MEMBER OF



APACHE
HOSE & BELTING CO., INC.