

# Baler Belt

## Special Order Catalog



OEM Quality  
For All Models

Custom Belting  
Gathering Wheels  
Lace & Accessories





*We're committed to you!*

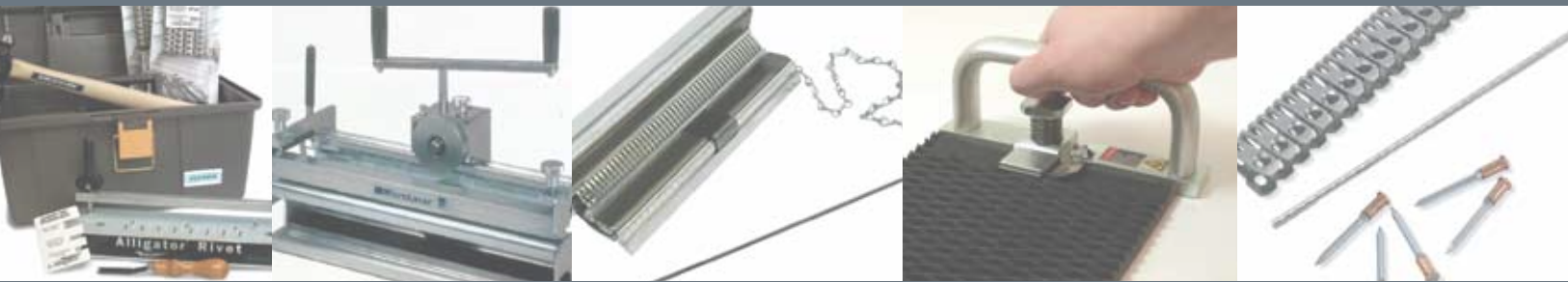
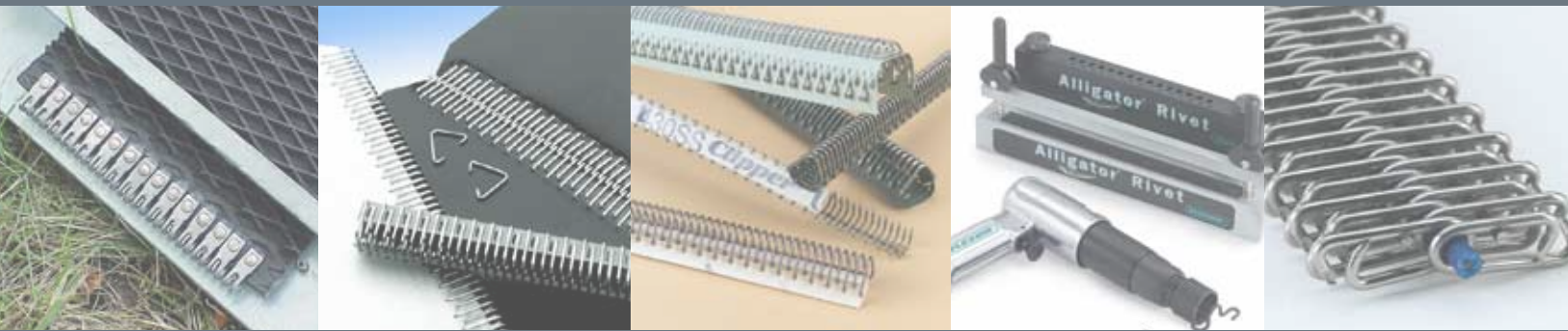
Dear Baler Belt Products User:

Apache Hose & Belting is privileged to have you as a customer. You are one of the reasons that we are the industry's premier supplier of baler belts and related products. Apache takes great pride in stocking the items you need, shipping them to you on-time, and introducing new and innovative products.

We value you as our business partner and look forward to serving you now and in the future.

Tom Pientok  
President and COO

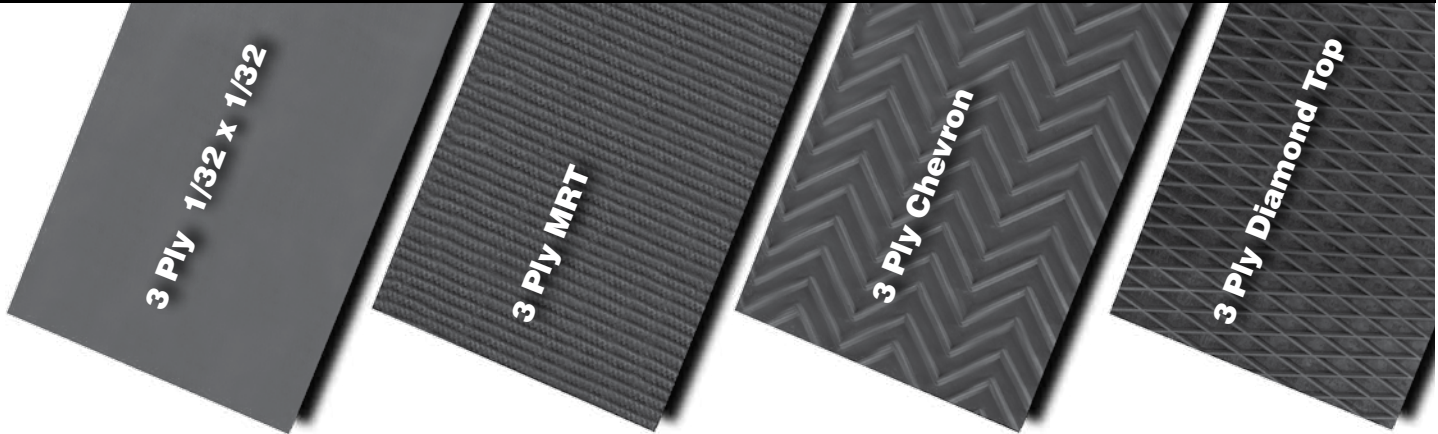
[www.apachehb.com](http://www.apachehb.com)



# Table of Contents

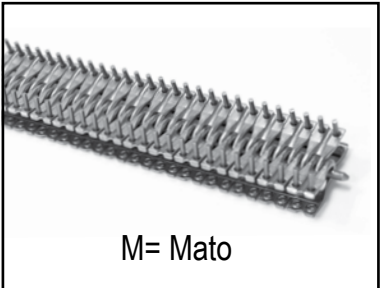
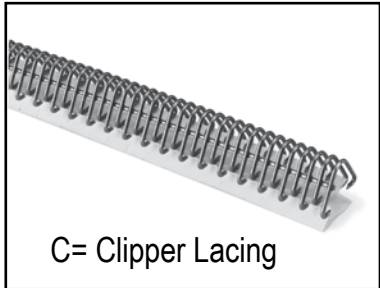
<b>ROUND BALER TOP BELTING</b>	
Allis Chalmers .....	3
Buhler Inland .....	3
Case-IH .....	3
CNH-Case-IH .....	4
Challenger .....	5
Class .....	5
Gehl .....	5
Hesston .....	6
John Deere .....	8
Massey Ferguson .....	9
McKee .....	10
New Holland .....	11
Renn .....	11
New Idea .....	11
Vermeer .....	12
Vicon .....	15
<b>ROUND BALER BOTTOM BELTING</b>	
.....	17
<b>BULK BELT</b>	
.....	18
<b>BALE THROWER BELTS</b>	
.....	19
<b>BALER STARTER FLAPS</b>	
.....	20
<b>GATHERING WHEELS</b>	
.....	21
<b>ACCESSORIES</b>	
.....	22

# Baler Belt



# Fastener Guide

Belt Fasteners are abbreviated as shown:



**Endless Belting =**   
(no fasteners)

2 Ply Endless Belt comes with Clean Out Cleats on the inside cover. Endless Belts are highlighted in grey in the "Belt Description" column.

MAKE & MODEL	BELTS PER BALER	BELT DIMENSIONS	LACING	BELT DESCRIPTION	PART NUMBER
<b>ALLIS CHALMERS - Roto Baler</b>					
top	6	5.5" x 72"	C	3 Ply 1/32 x 1/32	21001500
bottom	6	5.5" x 102"	C	3 Ply 1/32 x 1/32	21001520
<b>BUHLER INLAND</b>					
<b>6060</b>					
top	25	11.25" x 64.5"	C	3 Ply MRT	21002382
bottom	5	11.25" x 96.75"	C	3 Ply MRT	21002383
<b>6072</b>					
top	25	11.25" x 73.25"	C	3 Ply MRT	21002384
bottom	5	11.25" x 111.5"	C	3 Ply MRT	21002385
<b>CASE-IH</b>					
<b>241-2400</b>					
	9	4" x 430"	C	3 Ply 1/32 x 1/32	21001145
optional	2	10" x 430"	C	3 Ply 1/32 x 1/32	21002065
<b>2400</b>					
	9	4" x 424"	C	3 Ply 1/32 x 1/32	21001140
w/ dual springs	2	10" x 424"	C	3 Ply 1/32 x 1/32	21002060
<b>3440</b>					
top	12	11" x 73"	E	2 Ply Endless	52100965
bottom	4	11" x 103.5"	E	2 Ply Endless	52100955
top	12	11" x 73"	C	3 Ply 1/32 x 1/32	21002306
bottom	4	11" x 103.5"	C	3 Ply 1/32 x 1/32	21002341
top	12	11" x 73"	C	3 Ply MRT	21002305
bottom	4	11" x 103.5"	C	3 Ply MRT	21002340
<b>3450</b>					
top	30	4.75" x 73"	E	2 Ply Endless	21003525
newer	15	11" x 73"	E	2 Ply Endless	52100965
bottom	5	11" x 103.5"	E	2 Ply Endless	52100955
top	30	4.75" x 73"	C	3 Ply 1/32 x 1/32	21001425
newer	15	11" x 73"	C	3 Ply 1/32 x 1/32	21002306
bottom	5	11" x 103.5"	C	3 Ply 1/32 x 1/32	21002341
top	30	4.75" x 73.25"	C	3 Ply MRT	21001430
newer	15	11" x 73"	C	3 Ply MRT	21002305
bottom	5	11" x 103.5"	C	3 Ply MRT	21002340
<b>3640</b>					
top	55	4.75" x 73"	E	2 Ply Endless	21003525
newer	20	11" x 73"	E	2 Ply Endless	52100965
bottom	4	11" x 121.25"	E	2 Ply Endless	52100960
top	55	4.75" x 73"	C	3 Ply 1/32 x 1/32	21001425
newer	20	11" x 73"	C	3 Ply 1/32 x 1/32	21002306
bottom	4	11" x 121.25"	C	3 Ply 1/32 x 1/32	21002364
top	55	4.75" x 73.25"	C	3 Ply MRT	21001430
newer	20	11" x 73"	C	3 Ply MRT	21002305
bottom	4	11" x 121.25"	C	3 Ply MRT	21002365
<b>3650</b>					
top	55	4.75" x 73"	E	2 Ply Endless	21003525
newer	25	11" x 73"	E	2 Ply Endless	52100965
bottom	5	11" x 121.25"	E	2 Ply Endless	52100960
top	55	4.75" x 73"	C	3 Ply 1/32 x 1/32	21001425
newer	25	11" x 73"	C	3 Ply 1/32 x 1/32	21002306
bottom	5	11" x 121.25"	C	3 Ply 1/32 x 1/32	21002364
top	55	4.75" x 73.25"	C	3 Ply MRT	21001430
newer	25	11" x 73"	C	3 Ply MRT	21002305
bottom	5	11" x 121.25"	C	3 Ply MRT	21002365

MAKE & MODEL	BELTS PER BALER	BELT DIMENSIONS	LACING	BELT DESCRIPTION	PART NUMBER
<b>CASE-IH</b>					
8480					
top	25	11" x 73"	E	2 Ply Endless	52100965
bottom	5	11" x 121.25"	E	2 Ply Endless	52100960
top	25	11" x 73"	C	3 Ply 1/32 x 1/32	21002306
bottom	5	11" x 121.25"	C	3 Ply 1/32 x 1/32	21002364
top	25	11" x 73"	C	3 Ply MRT	21002305
bottom	5	11" x 121.25"	C	3 Ply MRT	21002365
8420					
	5	4.8" x 364"	C	3 Ply MRT	21001442
8430					
	6	7" x 366"	C	3 Ply Chevron	21001780
8435					
	6	7" x 471.5"	C	3 Ply Chevron	21001808
8440					
	9	4" x 452"	C	3 Ply Chevron	21001230
8450					
	4	7" x 570"	C	3 Ply Chevron	21001830
	2	6.5" x 572.5"	C	3 Ply Chevron	21001751
8455					
	6	7" x 562.5"	C	3 Ply Chevron	21001826
8460					
	6	7" x 570"	C	3 Ply Chevron	21001830
	2	6.5" x 572.5"	C	3 Ply Chevron	21001751
newer	8	7" x 562.5"	C	3 Ply Chevron	21001826
8465					
	8	7" x 562.5"	C	3 Ply Chevron	21001826
RS451					
	6	7" X 475"	C	3 Ply Chevron	21001814
RS551					
	8	7" X 475"	C	3 Ply Chevron	21001814
RS561					
	8	7" X 547	C	3 Ply Chevron	21001828
<b>CNH - CASE IH</b>					
RBX441, RBX 442, RBX443, RB444					
	6	7" x 272.5"	C	3 Ply Chevron	21001773
RBX451, RBX452, RBX453, RB454					
	6	7" x 343"	C	3 Ply Chevron	21001776
RBX461, RBX462, RBX463, RB464					
	6	7" x 420.5"	C	3 Ply Chevron	21001803
RBX561, RBX562, RBX 563, RB564					
	8	7" x 420.5"	C	3 Ply Chevron	21001803
<b>CHALLENGER</b>					
RB34					
	5	4.8" x 364"	C	3 Ply MRT	21001442
RB44					
	6	7" x 366"	C	3 Ply Chevron	21001780
RB45					
	6	7" x 475"	A	3 Ply MRT	21002580-ARJ
	6	7" x 475"	A	3 Ply Diamond Top	21002600-ARJ
RB46 & RB46B					
	6	7" x 547"	A	3 Ply MRT	21002585-ARJ
	6	7" x 547"	A	3 Ply Diamond Top	21001824-ARJ

MAKE & MODEL	BELTS PER BALER	BELT DIMENSIONS	LACING	BELT DESCRIPTION	PART NUMBER
<b>CHALLENGER</b>					
<b>RB46C &amp; RB46CA</b>					
	4	7" x 554.5"	A	3 Ply Diamond Top	21002930
	2	7" x 563.5"	A	3 Ply Diamond Top	21002934
<b>RB56</b>					
	8	7" x 547"	A	3 Ply MRT	21002585-ARJ
	8	7" x 547"	A	3 Ply Diamond Top	21001824-ARJ
<b>RB56C &amp; RB56CA</b>					
	4	7" x 554.5"	A	3 Ply Diamond Top	21002930
	4	7" x 563.5"	A	3 Ply Diamond Top	21002934
<b>RB452</b>					
	4	7" x 481.5"	A	3 Ply Diamond Top	21002910
	2	7" x 486.5"	A	3 Ply Diamond Top	21002920
<b>RB453</b>					
	4	7" x 475"	A	3 Ply Diamond Top	21002600-ARJ
	2	7" x 483"	A	3 Ply Diamond Top	21002915
<b>RB462</b>					
	4	7" x 571"	A	3 Ply Diamond Top	21002935
	2	7" x 578"	A	3 Ply Diamond Top	21002940
<b>RB463</b>					
	4	7" x 547"	A	3 Ply Diamond Top	21001824-ARJ
	2	7" x 554.5"	A	3 Ply Diamond Top	21002930
<b>RB463A</b>					
	6	7" x 547"	A	3 Ply Diamond Top	21001824-ARJ
<b>RB562</b>					
	4	7" x 571"	A	3 Ply Diamond Top	21002935
	4	7" x 578"	A	3 Ply Diamond Top	21002940
<b>RB563</b>					
	4	7" x 547"	A	3 Ply Diamond Top	21001824-ARJ
	4	7" x 554.5"	A	3 Ply Diamond Top	21002930
<b>RB563A</b>					
	8	7" x 547"	A	3 Ply Diamond Top	21001824-ARJ
<b>CLAAS</b>					
<b>Rollaut 180</b>					
	5	8.66.500"	C	3 Ply MRT	21002695
<b>260, 260-RC Variant</b>					
	5	8.46" x 444"	C	3 Ply MRT	21002680
<b>280, 280-RC Variant</b>					
	5	8.46" x 500"	C	3 Ply MRT	21002670
<b>GEHL</b>					
<b>1400</b>					
outside	2	6" x 450"	C	3 Ply 1/32 x 1/32	21001560
inside	3	5" x 450"	C	3 Ply 1/32 x 1/32	21001460
<b>1450</b>					
	5	6" x 462.5"	C	3 Ply 1/32 x 1/32	21001580
<b>1460</b>					
	5	6" x 462.5"	C	3 Ply 1/32 x 1/32	21001580
<b>1465</b>					
	6	6" x 462.5"	C	3 Ply MRT	21002750
<b>1470</b>					
	6	6" x 462.5"	C	3 Ply MRT	21002750
<b>1475</b>					
	6	6" x 469"	C	3 Ply Chevron	21002770

MAKE & MODEL	BELTS PER BALER	BELT DIMENSIONS	LACING	BELT DESCRIPTION	PART NUMBER
<b>GEHL</b>					
<b>1500</b>					
	9	4" x 466"	C	3 Ply 1/32 x 1/32	21001280
optional	2	10" x 466"	C	3 Ply 1/32 x 1/32	21002200
<b>1500A</b>					
	6	6" x 466"	C	3 Ply 1/32 x 1/32	21001600
<b>1600</b>					
	6	6" x 466"	C	3 Ply 1/32 x 1/32	21001600
<b>1850</b>					
	7	6" x 546"	C	3 Ply 1/32 x 1/32	21001620
<b>1860</b>					
	7	6" x 546"	C	3 Ply 1/32 x 1/32	21001620
<b>1865</b>					
	8	6" x 546"	C	3 Ply MRT	21002760
<b>1870</b>					
	8	6" x 546"	C	3 Ply MRT	21002760
<b>1875</b>					
	8	6" x 552"	C	3 Ply Chevron	21001624
<b>2480</b>					
	6	6" x 468.5"	C	3 Ply Chevron	21002765
<b>2580</b>					
	2	6.5" x 502.5"	A	3 Ply Chevron	21002625-ARJ
	4	6.5" x 474.5"	A	3 Ply Chevron	21002620-ARJ
<b>2680</b>					
	2	6.5" x 556.5"	A	3 Ply Chevron	21002630-ARJ
	4	6.5" x 577.5"	A	3 Ply Chevron	21002635-ARJ
<b>2780</b>					
	8	6" x 468.5"	C	3 Ply Chevron	21002765
<b>2880</b>					
	4	6.5" x 556.5"	A	3 Ply Chevron	21002630-ARJ
	4	6.5" x 577.5"	A	3 Ply Chevron	21002635-ARJ
<b>HESSTON</b>					
<b>514/814</b>					
top	25	11" x 73"	E	2 Ply Endless	52100965
bottom	5	11" x 121.25"	E	2 Ply Endless	52100960
top	25	11" x 73"	C	3 Ply 1/32 x 1/32	21002306
bottom	5	11" x 121.25"	C	3 Ply 1/32 x 1/32	21002364
top	25	11" x 73"	C	3 Ply MRT	21002305
bottom	5	11" x 121.25"	C	3 Ply MRT	21002365
<b>530, 730, 830</b>					
	5	4.8" x 364"	C	3 Ply MRT	21001442
<b>540, 740, 840</b>					
	6	7" x 366"	C	3 Ply Chevron	21001780
<b>545</b>					
	6	7" x 471.5"	C	3 Ply Chevron	21001808
<b>550</b>					
	4	7" x 570"	C	3 Ply Chevron	21001830
<b>555</b>					
	2	6.5" x 572.5"	C	3 Ply Chevron	21001751
	6	7" x 562.5"	C	3 Ply Chevron	21001826
<b>560</b>					
	6	7" x 570"	C	3 Ply Chevron	21001830
	2	6.5" x 572.5"	C	3 Ply Chevron	21001751
newer	8	7" x 562.5"	C	3 Ply Chevron	21001826

MAKE & MODEL	BELTS PER BALER	BELT DIMENSIONS	LACING	BELT DESCRIPTION	PART NUMBER
<b>HESSTON</b>					
<b>565</b>	8	7" x 562.5"	C	3 Ply Chevron	21001826
<b>745 first two years</b>	4	7" x 475.5"	A	3 Ply MRT	21002560-ARJ
	2	7" x 478.5"	A	3 Ply MRT	21002565-ARJ
<b>745</b>	4	7" x 481.5"	A	3 Ply Diamond Top	21002910
	2	7" x 486.5"	A	3 Ply Diamond Top	21002920
<b>845, 945</b>	6	7" x 475"	A	3 Ply MRT	21002580-ARJ
<b>846/A, 946</b>	6	7" x 547"	A	3 Ply MRT	21002585-ARJ
<b>855, 955</b>	8	7" x 475"	A	3 Ply MRT	21002580-ARJ
<b>856, 856/A</b>	8	7" x 547"	A	3 Ply MRT	21002585-ARJ
<b>956, 956/A</b>	8	7" x 547"	A	3 Ply MRT	21002585-ARJ
<b>5500</b>	9	4" x 452"	C	3 Ply Chevron	21001230
<b>5510</b>	9	4" x 452"	C	3 Ply Chevron	21001230
<b>5530</b>	5	4.8" x 364"	C	3 Ply MRT	21001442
<b>5540</b>	6	5.3" x 470"	C	3 Ply MRT	21001481
<b>5545</b>	6	5.3" x 465"	C	3 Ply MRT	21001473
<b>5580</b>	8	5.3 x 470"	C	3 Ply MRT	21001481
<b>5585</b>	8	5.3" x 465"	C	3 Ply MRT	21001473
<b>5600</b>	9	4" x 400"	C	3 Ply 1/32 x 1/32	21001070
optional	2	10" x 400"	C	3 Ply 1/32 x 1/32	21002140
<b>5800</b>	9	4" x 480"	C	3 Ply 1/32 x 1/32	21001286
requires kit	2	10" x 480"	C	3 Ply 1/32 x 1/32	21002225
<b>1734</b>	5	4.8" x 364	A	3 Ply Diamond Top	21002900
<b>1745</b>	4	7" x 481.5"	A	3 Ply Diamond Top	21002910
	2	7" x 486.5"	A	3 Ply Diamond Top	21002920
<b>1746</b>	4	7" x 571"	A	3 Ply Diamond Top	21002935
	2	7" x 578"	A	3 Ply Diamond Top	21002940
<b>1756</b>	4	7" x 571"	A	3 Ply Diamond Top	21002935
	4	7" x 578"	A	3 Ply Diamond Top	21002940
<b>2745</b>	4	7" x 475"	A	3 Ply Diamond Top	21002600-ARJ
	2	7" x 483"	A	3 Ply Diamond Top	21002915
<b>2746</b>	4	7" x 547"	A	3 Ply Diamond Top	21001824-ARJ
	2	7" x 554.5"	A	3 Ply Diamond Top	21002930

MAKE & MODEL	BELTS PER BALER	BELT DIMENSIONS	LACING	BELT DESCRIPTION	PART NUMBER
<b>HESSTON</b>					
<b>2746A</b>					
	6	7" x 547"	A	3 Ply Diamond Top	21001824-ARJ
<b>2756</b>					
	4	7" x 547"	A	3 Ply Diamond Top	21001824-ARJ
	4	7" x 554.5"	A	3 Ply Diamond Top	21002930
<b>2756A</b>					
	8	7" x 547"	A	3 Ply Diamond Top	21001824-ARJ
<b>2846, 2846A</b>					
	4	7" x 554.5"	A	3 Ply Diamond Top	21002930
	2	7" x 563.5"	A	3 Ply Diamond Top	21002934
<b>2856, 2856A</b>					
	4	7" x 554.5"	A	3 Ply Diamond Top	21002930
	4	7" x 563.5"	A	3 Ply Diamond Top	21002934
<b>5446A, 5546A</b>					
	6	7" x 547"	A	3 Ply Diamond Top	21001824-ARJ
<b>5456A, 5556A</b>					
	8	7" x 547"	A	3 Ply Diamond Top	21001824-ARJ
<b>5545</b>					
	4	7" x 475"	A	3 Ply Diamond Top	21002600-ARJ
	2	7" x 483"	A	3 Ply Diamond Top	21002915
<b>5546</b>					
	4	7" x 547"	A	3 Ply Diamond Top	21001824-ARJ
	2	7" x 554.5"	A	3 Ply Diamond Top	21002930
<b>5556</b>					
	4	7" x 547"	A	3 Ply Diamond Top	21001824-ARJ
	4	7" x 554.5"	A	3 Ply Diamond Top	21002930
<b>JOHN DEERE</b>					
<b>330, 335, 446, 447, 447, 448</b>					
	2	7" x 402.25"	A	3 Ply Diamond Top	21001790-ARJ
	4	7" x 410.25"	R	3 Ply Diamond Top	21001800-ARJ
	2	7" x 402.25"	M	3 Ply Diamond Top	21001790-MATO
	4	7" x 410.75"	M	3 Ply Diamond Top	21001800-MATO
<b>375, 546, 546, 547</b>					
	4	7" x 402.25"	A	3 Ply Diamond Top	21001790-ARJ
	4	7" x 410.25"	A	3 Ply Diamond Top	21001800-ARJ
	4	7" x 402.25"	M	3 Ply Diamond Top	21001790-MATO
	4	7" x 410.75"	M	3 Ply Diamond Top	21001800-MATO
<b>385, 456, 457, 458, 456 Silage, 458 Silage</b>					
	2	7" x 461"	A	3 Ply Diamond Top	21001816-ARJ
	4	7" x 466.5"	A	3 Ply Diamond Top	21001818-ARJ
	2	7" x 461"	M	3 Ply Diamond Top	21001816-MATO
	4	7" x 466.5"	M	3 Ply Diamond Top	21001818-MATO
<b>410</b>					
	6	4" x 415"	C	3 Ply 1/32 x 1/32	21001100
optional	2	10" x 415"	C	3 Ply 1/32 x 1/32	21002020
optional	2	12" x 417.5"	C	3 Ply 1/32 x 1/32	21002400
<b>430, 435, 466, 466, 467</b>					
	2	7" x 525"	A	3 Ply Diamond Top	21001810-ARJ
	4	7" x 531"	A	3 Ply Diamond Top	21001820-ARJ
	2	7" x 525"	M	3 Ply Diamond Top	21001810-MATO
	4	7" x 531"	M	3 Ply Diamond Top	21001820-MATO
<b>500</b>					
	9	4" x 422"	C	3 Ply 1/32 x 1/32	21001120
optional	2	10" x 422"	C	3 Ply 1/32 x 1/32	21002040

MAKE & MODEL	BELTS PER BALER	BELT DIMENSIONS	LACING	BELT DESCRIPTION	PART NUMBER
<b>JOHN DEERE</b>					
<b>510</b>					
	9	4" x 484"	C	3 Ply 1/32 x 1/32	21001310
optional	2	10" x 484"	C	3 Ply 1/32 x 1/32	21002240
requires kit	2	12" x 486.5"	C	3 Ply 1/32 x 1/32	21002425
<b>530, 535, 566, 567, 568</b>					
	4	7" x 525"	A	3 Ply Diamond Top	21001810-ARJ
	4	7" x 531"	A	3 Ply Diamond Top	21001820-ARJ
	4	7" x 525"	M	3 Ply Diamond Top	21001810-MATO
	4	7" x 531"	M	3 Ply Diamond Top	21001820-MATO
<b>556, 557, 558</b>					
	4	7" x 461"	A	3 Ply Diamond Top	21001816-ARJ
	4	7" x 466.5"	A	3 Ply Diamond Top	21001818-ARJ
	4	7" x 461"	M	3 Ply Diamond Top	21001816-MATO
	4	7" x 466.5"	M	3 Ply Diamond Top	21001818-MATO
<b>MASSEY FERGUSON</b>					
<b>140</b>					
	5	4.8" x 364"	C	3 Ply MRT	21001442
<b>142</b>					
	6	7" x 366"	C	3 Ply Chevron	21001780
<b>144</b>					
	6	7" x 562.5"	C	3 Ply Chevron	21001826
<b>146</b>					
	6	7" x 562.5"	C	3 Ply Chevron	21001826
<b>450</b>					
	8	4" x 388"	C	3 Ply 1/32 x 1/32	21001050
optional	2	9" x 388"	C	3 Ply 1/32 x 1/32	21001870
<b>560</b>					
	9	4" x 440"	C	3 Ply 1/32 x 1/32	21001200
optional	2	10" x 440"	C	3 Ply 1/32 x 1/32	21002140
<b>634</b>					
	4	6" x 428"	C	3 Ply 1/32 x 1/32	21001540
<b>645</b>					
	6	6.5" x 528"	C	3 Ply 1/32 x 1/32	21001740
<b>656</b>					
	8	6.5" x 528"	C	3 Ply 1/32 x 1/32	21001740
<b>822</b>					
front	6	6.375" x 187.8"	C	3 Ply MRT	21001640
rear	6	6.375" x 226.8"	C	3 Ply MRT	21001680
<b>825</b>					
	6	6" x 463"	C	3 Ply Chevron	21001588
<b>828</b>					
front	6	6.375" x 211.42"	C	3 Ply MRT	21001660
rear	6	6.375" x 306.3"	C	3 Ply MRT	21001700
<b>834 &amp; 835</b>					
front	8	6.375" x 211.42"	C	3 Ply MRT	21001660
rear	8	6.375" x 306.3"	C	3 Ply MRT	21001700
upper	8	6" x 545.5"	C	3 Ply MRT	21001623
<b>1440, 1450, 1455</b>					
	8	4" x 436"	C	3 Ply 1/32 x 1/32	21001180
optional	2	9" x 437"	C	3 Ply 1/32 x 1/32	21001910
optional inside	2	10" x 437"	C	3 Ply 1/32 x 1/32	21002120
<b>1550, 1560, 1565</b>					
	6	4" x 512"	C	3 Ply 1/32 x 1/32	21001350
optional	3	9" x 514"	C	3 Ply 1/32 x 1/32	21001955
optional inside	2	10" x 514"	C	3 Ply 1/32 x 1/32	21002285

MAKE & MODEL	BELTS PER BALER	BELT DIMENSIONS	LACING	BELT DESCRIPTION	PART NUMBER
<b>MASSEY FERGUSON</b>					
<b>1734</b>					
	5	4.8" x 364"	A	3 Ply MRT	21002900
<b>1745 first two years s/n HM89101 - HP89100</b>					
	4	7" x 475.5"	A	3 Ply MRT	21002910
	2	7" x 478.5"	A	3 Ply MRT	21002920
<b>1745 s/n HP89101 &amp; above</b>					
	4	7" x 481.5"	A	3 Ply Chevron	21002605-ARJ
	2	7" x 486.5"	A	3 Ply Chevron	21002610-ARJ
<b>1746</b>					
	4	7" x 571"	A	3 Ply Diamond Top	21002935
	2	7" x 578"	A	3 Ply Diamond Top	21002940
<b>1756</b>					
	4	7" x 571"	A	3 Ply Diamond Top	21002935
	4	7" x 578"	A	3 Ply Diamond Top	21002940
<b>2646A</b>					
	6	7" x 547"	A	3 Ply Diamond Top	21001824-ARJ
<b>2656A</b>					
	8	7" x 547"	A	3 Ply Diamond Top	21001824-ARJ
<b>2745</b>					
	4	7" x 475"	A	3 Ply Diamond Top	21002600-ARJ
	2	7" x 483"	A	3 Ply Diamond Top	21002915
<b>2746</b>					
	4	7" x 547"	A	3 Ply Diamond Top	21001824-ARJ
	2	7" x 554.5"	A	3 Ply Diamond Top	21002930
<b>2746A</b>					
	6	7" x 547"	A	3 Ply Diamond Top	21001824-ARJ
<b>2756</b>					
	4	7" x 547"	A	3 Ply Diamond Top	21001824-ARJ
	4	7" x 554.5"	A	3 Ply Diamond Top	21002930
<b>2756A</b>					
	8	7" x 547"	A	3 Ply Diamond Top	21001824-ARJ
<b>2846 &amp; 2846A</b>					
	4	7" x 554.5"	A	3 Ply Diamond Top	21002930
	2	7" x 563.5"	A	3 Ply Diamond Top	21002934
<b>2856 &amp; 2856A</b>					
	4	7" x 554.5"	A	3 Ply Diamond Top	21002930
	4	7" x 563.5"	A	3 Ply Diamond Top	21002934
<b>MCKEE</b>					
<b>875 &amp; 878</b>					
	45	4.75" x 64.5"	C	3 Ply 1/32 x 1/32	21001390
newer	30	7" x 64.5"	C	3 Ply 1/32 x 1/32	21001755
bottom	6	7" x 104.5"	C	3 Ply 1/32 x 1/32	21001770
<b>1500 &amp; 1578</b>					
	55	4.75" x 73"	E	2 Ply Endless	21003525
bottom	5	11" x 121.25"	E	2 Ply Endless	52100960
	55	4.75" x 73"	C	3 Ply 1/32 x 1/32	21001425
bottom	5	11" x 121.25"	C	3 Ply 1/32 x 1/32	21002364
	55	4.75" x 73"	C	3 Ply MRT	21001430
bottom	5	11" x 121.25"	C	3 Ply MRT	21002365
<b>NEW HOLLAND</b>					
<b>551</b>					
outside	2	6" x 450"	C	3 Ply 1/32 x 1/32	21001560
inside	3	5" x 450"	C	3 Ply 1/32 x 1/32	21001460

MAKE & MODEL	BELTS PER BALER	BELT DIMENSIONS	LACING	BELT DESCRIPTION	PART NUMBER
<b>NEW HOLLAND</b>					
<b>552</b>					
	6	6" x 466"	C	3 Ply MRT	21002755
<b>630, 638, 634</b>					
	6	7" x 272.5"	C	3 Ply MRT	21001774
<b>640, 644, 648</b>					
	6	7" x 343"	C	3 Ply MRT	21001777
<b>678</b>					
	8	7" x 343"	C	3 Ply MRT	21001777
<b>650, 654, 658</b>					
	6	7" x 420.5"	C	3 Ply MRT	21001804
<b>660, 664, 688</b>					
	8	7" x 420.5"	C	3 Ply MRT	21001804
<b>BR730</b>					
	6	7" x 272.5"	C	3 Ply MRT	21001774
<b>BR740, BR740A</b>					
	6	7" x 343"	C	3 Ply MRT	21001777
<b>BR750</b>					
	6	7" x 420.5"	C	3 Ply MRT	21001804
<b>BR770</b>					
	8	7" x 343"	C	3 Ply MRT	21001777
<b>BR780</b>					
	8	7" x 420.5"	C	3 Ply MRT	21001804
<b>BR7050</b>					
	6	7" x 272.5"	C	3 Ply MRT	21001774
<b>BR7060</b>					
	8	7" x 343"	C	3 Ply MRT	21001777
<b>BR7070</b>					
	6	7" x 420.5"	C	3 Ply MRT	21001804
<b>BR7080</b>					
	8	7" x 343"	C	3 Ply MRT	21001777
<b>BR7090</b>					
	8	7" x 420.5"	C	3 Ply MRT	21001804
<b>RENN</b>					
<b>121</b>					
	4	4" x 465"	C	3 Ply 1/32 x 1/32	21001260
	2	9" x 465"	C	3 Ply 1/32 x 1/32	21001930
<b>151</b>					
	6	4" x 465"	C	3 Ply 1/32 x 1/32	21001260
	2	9" x 465"	C	3 Ply 1/32 x 1/32	21001930
<b>NEW IDEA</b>					
<b>483</b>					
top	12	11" x 73"	E	2 Ply Endless	52100965
bottom	4	11" x 103.5"	E	2 Ply Endless	52100955
top	12	11" x 73"	C	3 Ply 1/32 x 1/32	21002306
bottom	4	11" x 103.5"	C	3 Ply 1/32 x 1/32	21002341
top	12	11" x 73"	C	3 Ply MRT	21002305
bottom	4	11" x 103.5"	C	3 Ply MRT	21002340
<b>484 Earlier</b>					
top	30	4.75" x 73"	E	2 Ply Endless	21003525
bottom	5	11" x 103.5"	E	2 Ply Endless	52100955
top	30	4.75" x 73"	C	3 Ply 1/32 x 1/32	21001425
bottom	5	11" x 103.5"	C	3 Ply 1/32 x 1/32	21002341

MAKE & MODEL	BELTS PER BALER	BELT DIMENSIONS	LACING	BELT DESCRIPTION	PART NUMBER
<b>NEW IDEA</b>					
<b>484 &amp; 4845 Newer</b>					
top	15	11" x 73"	C	3 Ply MRT	21002305
bottom	5	11" x 103.5"	C	3 Ply MRT	21002340
<b>485 &amp; 4855</b>					
top	20	11" x 73"	E	2 Ply Endless	52100965
bottom	4	11" x 121.25"	E	2 Ply Endless	52100960
top	20	11" x 73"	C	3 Ply 1/32 x 1/32	21002306
bottom	4	11" x 121.25"	C	3 Ply 1/32 x 1/32	21002364
top	20	11" x 73"	C	3 Ply MRT	21002305
bottom	4	11" x 121.25"	C	3 Ply MRT	21002365
<b>456, 486, 4865</b>					
top	55	4.75" x 73"	E	2 Ply Endless	21003525
top	25	11" x 73"	E	2 Ply Endless	52100965
bottom	5	11" x 121.25"	E	2 Ply Endless	52100960
top	55	4.75" x 73"	C	3 Ply 1/32 x 1/32	21001425
top	25	11" x 73"	C	3 Ply 1/32 x 1/32	21002306
bottom	5	11" x 121.25"	C	3 Ply 1/32 x 1/32	21002364
top	55	4.75" x 73"	C	3 Ply MRT	21001430
top	25	11" x 73"	C	3 Ply MRT	21002305
bottom	5	11" x 121.25"	C	3 Ply MRT	21002365
<b>4643, 6243, 6343</b>					
	5	4.8" x 364"	C	3 Ply MRT	21001442
<b>4644, 6244, 6344</b>					
	6	7" x 366"	C	3 Ply Chevron	21001780
<b>4664</b>					
	6	7" x 562.5"	C	3 Ply Chevron	21001826
<b>4665 All Models</b>					
	8	7" x 562.5"	C	3 Ply Chevron	21001826
<b>6254 first two years s/n HM89101-HP891000</b>					
	4	7" x 475.5"	A	3 Ply MRT	21002560-ARJ
	2	7" x 478.5"	A	3 Ply MRT	21002565-ARJ
<b>6254 s/n HP8910001 &amp; above</b>					
	4	7" x 481.5"	A	3 Ply Diamond Top	21002910
	2	7" x 486.5"	A	3 Ply Diamond Top	21002920
<b>6345 &amp; 6454</b>					
	6	7" x 475"	A	3 Ply MRT	21002590-ARJ
	6	7" x 475"	A	3 Ply Diamond Top	21002600-ARJ
<b>6364, 6464</b>					
	6	7" x 547"	A	3 Ply MRT	21002595-ARJ
	6	7" x 547"	A	3 Ply Diamond Top	21001824-ARJ
<b>6365, 6465</b>					
	8	7" x 547"	A	3 Ply MRT	21002595-ARJ
	8	7" x 547"	A	3 Ply Diamond Top	21001824-ARJ
<b>VERMEER</b>					
<b>403 F &amp; 403 G</b>					
	6	4" x 358"	C	3 Ply 1/32 x 1/32	21001030
optional	2	9" x 358"	C	3 Ply 1/32 x 1/32	21001850
<b>503 I</b>					
	4	6" x 428"	C	3 Ply 1/32 x 1/32	21001540
<b>504 C</b>					
	8	4" x 388"	C	3 Ply 1/32 x 1/32	21001050
optional	2	9" x 388"	C	3 Ply 1/32 x 1/32	21001870
<b>504 F, 504 G, 504 H</b>					
	8	4" x 436"	C	3 Ply 1/32 x 1/32	21001180
optional	2	9" x 437"	C	3 Ply 1/32 x 1/32	21001910
optional	2	10" x 437"	C	3 Ply 1/32 x 1/32	21002120

MAKE & MODEL	BELTS PER BALER	BELT DIMENSIONS	LACING	BELT DESCRIPTION	PART NUMBER
<b>VERMEER</b>					
<b>504-I, 504-IS, 504-L/S</b>					
	6	6" x 424"	C	3 Ply 1/32 x 1/32	21001526
optional	3	14" x 424"	C	3 Ply 1/32 x 1/32	21002421
<b>504 Super I</b>					
	2	6" x 424"	C	3 Ply 1/32 x 1/32	21001526
	2	14" x 424"	C	3 Ply 1/32 x 1/32	21002421
<b>504 Super I w/ netwrap</b>					
	2	6" x 414"	C	3 Ply 1/32 x 1/32	21001525
	3	14" x 414"	C	3 Ply 1/32 x 1/32	21002426
<b>504 Super I w/ traction roller</b>					
	2	6" x 438"	C	3 Ply 1/32 x 1/32	21001529
	3	14" x 438"	C	3 Ply 1/32 x 1/32	21002428
<b>504 Super I w/ traction roller &amp; netwrap</b>					
	2	6" x 428"	C	3 Ply 1/32 x 1/32	21001540
	3	14" x 428"	C	3 Ply 1/32 x 1/32	21002427
<b>554 XL , 554XL Silage</b>					
	2	6" x 450"	C	3 Ply 1/32 x 1/32	21001560
	2	14" x 450"	C	3 Ply 1/32 x 1/32	21002423
<b>554XL w/ wide pickup</b>					
	2	6" x 440"	C	3 Ply 1/32 x 1/32	21001549
	2	14" x 440"	C	3 Ply 1/32 x 1/32	21002429
<b>5400 Rebel</b>					
	2	6" x 424"	C	3 Ply 1/32 x 1/32	21001526
	2	14" x 424"	C	3 Ply 1/32 x 1/32	21002421
<b>5410 Rebel s/n 1135 &amp; prior</b>					
	3	6" x 409"	C	3 Ply MRT	21001522
	3	6" x 419"	C	3 Ply MRT	21001523
<b>5410 Rebel s/n 1136 &amp; later</b>					
	3	6" x 427"	C	3 Ply MRT	21001527
	3	6" x 437"	C	3 Ply MRT	21001528
<b>504 M Classic s/n108 - 403</b>					
	3	7" x 409"	A	3 Ply MRT	21002970
	3	7" x 419"	A	3 Ply MRT	21002971
<b>504 M Classic s/n 404 &amp; Later</b>					
	3	7" x 427"	A	3 Ply MRT	21002972
	3	7" x 437"	A	3 Ply MRT	21002973
<b>505 I</b>					
	8	6" x 424"	C	3 Ply 1/32 x 1/32	21001526
optional	3	14" x 424"	C	3 Ply 1/32 x 1/32	21002421
<b>505 Super I</b>					
	2	6" x 424"	C	3 Ply 1/32 x 1/32	21001526
	3	14" x 424"	C	3 Ply 1/32 x 1/32	21002421
<b>505 Super I w/ netwrap</b>					
	2	6" x 414"	C	3 Ply 1/32 x 1/32	21001525
	3	14" x 414"	C	3 Ply 1/32 x 1/32	21002426
<b>505 Super I w/ traction roller</b>					
	2	6" x 438"	C	3 Ply 1/32 x 1/32	21001529
	3	14" x 438"	C	3 Ply 1/32 x 1/32	21002428
<b>505 Super I w/ traction roller &amp; netwrap</b>					
	2	6" x 428"	C	3 Ply 1/32 x 1/32	21001540
	3	14" x 428"	C	3 Ply 1/32 x 1/32	21002427
<b>505 L</b>					
	2	6" x 424"	C	3 Ply 1/32 x 1/32	21001526
optional	3	14" x 424"	C	3 Ply 1/32 x 1/32	21002421

MAKE & MODEL	BELTS PER BALER	BELT DIMENSIONS	LACING	BELT DESCRIPTION	PART NUMBER
<b>VERMEER</b>					
<b>555 XL</b>					
	2	6" x 450"	C	3 Ply 1/32 x 1/32	21001560
	3	14" x 450"	C	3 Ply 1/32 x 1/32	21002423
<b>5500 Rebel</b>					
	2	6" x 424"	C	3 Ply 1/32 x 1/32	21001526
	3	14" x 424"	C	3 Ply 1/32 x 1/32	21002421
<b>505 M Classic s/n 109 - 428</b>					
	4	7" x 409"	A	3 Ply MRT	21002970
	4	7" x 419"	A	3 Ply MRT	21002971
<b>505 M Classic s/n 429 &amp; later</b>					
	4	7" x 427"	A	3 Ply MRT	21002972
	4	7" x 437"	A	3 Ply MRT	21002973
<b>500 M</b>					
	3	7" x 442"	A	3 Ply MRT	21002974
	3	7" x 451"	A	3 Ply MRT	21002975
<b>604 J &amp; 604 Super J</b>					
	6	6.5" x 528"	C	3 Ply 1/32 x 1/32	21001740
<b>604 Super J w/ traction roller</b>					
	6	6.5" x 542"	C	3 Ply 1/32 x 1/32	21001744
<b>604-K, 604-L, 604XL</b>					
	2	6.5" x 528"	C	3 Ply 1/32 x 1/32	21001740
	2	14" x 528"	C	3 Ply 1/32 x 1/32	21002424
<b>604-M Early Models</b>					
	3	7" x 522"	A	3 Ply 1/32 x 1/32	21002550-ARJ
	3	7" x 533"	A	3 Ply 1/32 x 1/32	21002551-ARJ
<b>604-M Later Models</b>					
	3	7" x 522"	A	3 Ply MRT	21002570-ARJ
	3	7" x 533"	A	3 Ply MRT	21002575-ARJ
<b>604 Super M</b>					
	3	7" x 533"	A	3 Ply MRT	21002575-ARJ
	3	7" x 540"	A	3 Ply MRT	21002978
<b>605-A</b>					
	9	4" x 400"	C	3 Ply 1/32 x 1/32	21001070
optional	2, 4	10" x 400"	C	3 Ply 1/32 x 1/32	21002140
<b>605-B</b>					
	9	4" x 388"	C	3 Ply 1/32 x 1/32	21001050
optional	2, 4	10" x 388"	C	3 Ply 1/32 x 1/32	21001975
<b>605-C</b>					
	9	4" x 440"	C	3 Ply 1/32 x 1/32	21001200
optional	2, 4	10" x 440"	C	3 Ply 1/32 x 1/32	21002140
<b>605-D</b>					
	9	4" x 450"	C	3 Ply 1/32 x 1/32	21001220
optional	2, 4	10" x 450"	C	3 Ply 1/32 x 1/32	21002160
<b>605-E Original</b>					
	5	4" x 457"	C	3 Ply 1/32 x 1/32	21001250
optional	2	10" x 457"	C	3 Ply 1/32 x 1/32	21002180
<b>605-E Modification</b>					
	5	4" x 440"	C	3 Ply 1/32 x 1/32	21001200
optional	2	10" x 440"	C	3 Ply 1/32 x 1/32	21002140
<b>605-F, 605-G, 605-H</b>					
	6	4" x 512"	C	3 Ply 1/32 x 1/32	21001350
optional	2	9" x 514"	C	3 Ply 1/32 x 1/32	21001955
optional	2	10" x 514"	C	3 Ply 1/32 x 1/32	21002285
<b>605-J &amp; 605 Super J</b>					
	8	6.5" x 528"	C	3 Ply 1/32 x 1/32	21001740

MAKE & MODEL	BELTS PER BALER	BELT DIMENSIONS	LACING	BELT DESCRIPTION	PART NUMBER
<b>VERMEER</b>					
<b>605-J w/traction roller</b>					
	8	6.5" x 542"	C	3 Ply 1/32 x 1/32	21001744
<b>605-K, 605L, 605XL</b>					
	2	6.5" x 528"	C	3 Ply 1/32 x 1/32	21001740
	3	14" x 528"	C	3 Ply 1/32 x 1/32	21002424
<b>605-M</b>					
	4	7" x 522"	A	3 Ply 1/32 x 1/32	21002550-ARJ
	4	7" x 533"	A	3 Ply 1/32 x 1/32	21002551-ARJ
	4	7" x 522"	A	3 Ply MRT	21002570-ARJ
	4	7" x 533"	A	3 Ply MRT	21002575-ARJ
<b>605 Super M</b>					
	4	7" x 533"	A	3 Ply MRT	21002570-ARJ
	4	7" x 540"	A	3 Ply MRT	21002575-ARJ
<b>664 Rancher</b>					
	3	7" x 482"	A	3 Ply MRT	21002976
	3	7" x 492"	A	3 Ply MRT	21002977
<b>665 M Rancher</b>					
	4	7" x 482"	A	3 Ply MRT	21002976
	4	7" x 492"	A	3 Ply MRT	21002977
<b>706-A</b>					
	11	4" x 493"	C	3 Ply 1/32 x 1/32	21001330
optional	2, 4	10" x 493"	C	3 Ply 1/32 x 1/32	21002260
<b>706-C</b>					
	12	4" x 541"	C	3 Ply 1/32 x 1/32	21001370
optional	2, 6	10" x 541"	C	3 Ply 1/32 x 1/32	21002300
<b>VICON</b>					
<b>260 Upper</b>					
	30	7" x 64.75"	C	3 Ply 1/32 x 1/32	21001754
bottom	6	7" x 104.5"	C	3 Ply 1/32 x 1/32	21001770
<b>560</b>					
upper	25	11" x 73"	E	2 Ply Endless	52100965
bottom	5	11" x 121.25"	E	2 Ply Endless	52100960
upper	25	11" x 73"	C	3 Ply 1/32 x 1/32	21002306
bottom	5	11" x 121.25"	C	3 Ply 1/32 x 1/32	21002364
upper	25	11" x 73"	C	3 Ply MRT	21002305
bottom	5	11" x 121.25"	C	3 Ply MRT	21002365
<b>1200</b>					
upper	4	4" x 465"	C	3 Ply 1/32 x 1/32	21001260
upper	2	9" x 465"	C	3 Ply 1/32 x 1/32	21001930
<b>RP1210</b>					
upper	45	4.72" x 64.75"	C	3 Ply 1/32 x 1/32	21001398
bottom	6	7" x 104.5"	C	3 Ply 1/32 x 1/32	21001770
<b>RP1210 New Models</b>					
	30	7" x 64.75"	C	3 Ply 1/32 x 1/32	21001754
bottom	6	7" x 104.5"	C	3 Ply 1/32 x 1/32	21001770
<b>RP1211</b>					
upper	25	7.25" x 64.75"	C	3 Ply MRT	21002665
bottom	5	7.25" x 97"	C	3 Ply MRT	21002660
<b>RP1211M</b>					
upper	30	7.25" x 64.75"	C	3 Ply MRT	21002665
bottom	6	7.25" x 97"	C	3 Ply MRT	21002660

MAKE & MODEL	BELTS PER BALER	BELT DIMENSIONS	LACING	BELT DESCRIPTION	PART NUMBER
<b>VICON</b>					
<b>RP1510</b>					
upper	55	4.75" x 73"	E	2 Ply Endless	21003525
bottom	5	11" x 121.25"	E	2 Ply Endless	52100960
upper	55	4.75" x 73"	C	3 Ply 1/32 x 1/32	21001425
bottom	5	11" x 121.25"	C	3 Ply 1/32 x 1/32	21002364
upper	55	4.75" x 73"	C	3 Ply MRT	21001430
bottom	5	11" x 121.25"	C	3 Ply MRT	21002365
<b>RP1510 New Models</b>					
upper	25	11" x 73"	E	2 Ply Endless	52100965
bottom	5	11" x 121.25"	E	2 Ply Endless	52100960
upper	25	11" x 73"	C	3 Ply 1/32 x 1/32	21002306
upper	5	11" x 121.25"	C	3 Ply 1/32 x 1/32	21002364
upper	25	11" x 73"	C	3 Ply MRT	21002305
bottom	5	11" x 121.25"	C	3 Ply MRT	21002365
<b>RP1511</b>					
upper	25	11" x 73"	E	2 Ply Endless	52100965
bottom	5	11" x 121.25"	E	2 Ply Endless	52100960
upper	25	11" x 73"	C	3 Ply 1/32 x 1/32	21002306
bottom	5	11" x 121.25"	C	3 Ply 1/32 x 1/32	21002364
upper	25	11" x 73"	C	3 Ply MRT	21002305
bottom	5	11" x 121.25"	C	3 Ply MRT	21002365
<b>RV157</b>					
front	6	6.37" x 194.00"	C	3 Ply MRT	21002800
rear	6	6.37" x 260.00"	C	3 Ply MRT	21002785
<b>RV186</b>					
front	6	6.37" x 211.50"	C	3 Ply MRT	21002790
rear	6	6.37" x 306.30"	C	3 Ply MRT	21002775
<b>RV187</b>					
front	6	6.37" x 211.00"	C	3 Ply MRT	21002795
rear	6	6.37" x 306.00"	C	3 Ply MRT	21002780
<b>RV1501</b>					
upper	5	8.46" x 403.54"	C	3 Ply MRT	21002690
<b>RV1601</b>					
upper	5	8.46" x 421.26"	C	3 Ply MRT	21002685
<b>RV1901</b>					
upper	5	8.46" x 474.44"	C	3 Ply MRT	21002675

# Round Baler Bottom Belts

MAKE & MODEL	BELT DIMENSIONS	#BELTS PER BALER	V-GUIDE	CLIPPER P/N
<b>CASE-IH</b> (All belts are 2 ply 1/32" x 1/32", except as noted)				
<b>241 &amp; 2400</b>	60" x 120"	1	no	21002490-CLP
<b>GEHL</b>				
<b>1400, 1450, 1460, 1465</b>	44.25" x 56.5"	1	yes	21002440-CLP
<b>1400 (Early Models) 1400</b>	44.25" x 69.5"	1	yes	21002450-CLP
<b>1500</b>	60" x 95"	1	yes	21002475-CLP
<b>1500-A &amp; 1600</b>	60" x 95"	1	yes	21002475-CLP
<b>1850 &amp; 1860</b>	60" x 56.5"	1	yes	21002460-CLP
<b>HESSTON</b>				
<b>5600</b>	60" x 120"	1	yes	21002480-CLP
<b>JOHN DEERE</b>				
<b>500</b>	60" x 138"	1	yes	21002500-CLP
<b>410*</b>	8" x 74"	5	no	21350099
<b>510*</b>	8" x 74"	7	no	21350099
<b>MASSEY FERGUSON</b>				
<b>450</b>	60" x 120"	1	yes	21002480-CLP
<b>NEW HOLLAND</b>				
<b>551</b>	44.25" x 56.5"	1	yes	21002440-CLP
<b>551 (Early Models)</b>	44.25" x 69.5"	1	yes	21002450-CLP
<b>552</b>	60" x 96"	1	yes	21002475-CLP
<b>VERMEER</b>				
<b>605-A</b>	60" x 120"	1	yes	21002480-CLP
<b>605-B</b>	60" x 120"	1	yes	21002480-CLP
<b>706-A</b>	72" x 144"	1	yes	21002510-CLP

\* John Deere® 410 & 510 are 2 ply nylon construction

All bottom belts laced with clipper hooks include 3/32" nylon covered cable with attached leader wire for fast and easy installation. Apache can replace your current bottom belt upon request. Call for a quote.

#### BEFORE INSTALLING BOTTOM BELT:

- Check all bearings
- Check if rollers are clean and NOT bent or broken.
- Check if v-guide slot is clean (except IH which has no v-guide slot).

#### INSTALL BELT:

- Look for direction of travel arrow.
- The notched corners with one less hook is the end being pulled.

#### INSTALL CABLE:

- We have attached a leader wire to the cable for easier installation

#### DO NOT JERK

- on leader wire with pliers, it will come off.
- Simply snip off the leader wire after installed.
- Tuck the cable back into the hooks on end being pulled.

#### AFTER INSTALLING BELT:

- Take up roller adjustment to recommended tension.
- Run the baler momentarily to check for belt tracking. Re-adjust if needed.

# Bulk Belt by the Foot

Belt Width	Belt Description	Part Number
<b>3 ply 1/32 x 1/32</b>		
4"	3 ply 1/32 x 1/32	20029175-4
5"	3 ply 1/32 x 1/32	20029175-5
5.5"	3 ply 1/32 x 1/32	20029175-5.5
6"	3 ply 1/32 x 1/32	20029175-6
6.5"	3 ply 1/32 x 1/32	20029175-6.5
7"	3 ply 1/32 x 1/32	20029175-7
9"	3 ply 1/32 x 1/32	20029175-9
10"	3 ply 1/32 x 1/32	20029175-10
12"	3 ply 1/32 x 1/32	20029175-12
14"	3 ply 1/32 x 1/32	20029175-14
<b>3 ply MRT</b>		
4.8"	3 ply MRT	20029176-4.8
5.3"	3 ply MRT	200291765.3
6"	3 ply MRT	20029176-6
6.38"	3 ply MRT	20029176-6.38
7"	3 ply MRT	20029176-7
<b>3 ply Chevron</b>		
4"	3 ply Chevron	20029177-4
6"	3 ply Chevron	20029177-6
6.5"	3 ply Chevron	20029177-6.5
7"	3 ply Chevron	20029177-7
<b>3 ply Diamond Top</b>		
7"	3 ply Diamond Top	20029178-7

Custom widths are available upon request and subject to additional charge

# Bale Thrower Belts

Make	Description	Dimensions	Part Number
<b>3 Ply Diamond Top with Clipper Lace Installed</b>			
Allis Chalmers 44, 301	Bale Thrower	11.5" x 50.5"	21003000
Case-IH SBX520, 530, 540	Bale Thrower	12" x 71.5"	21003004
Challenger SB34, SB36	Bale Thrower	12" x 64.5"	21003003
Ford 111	Bale Thrower	12" x 52.5"	21003002
Hesston 222	Bale Thrower	12" x 64.5"	21003003
New Holland 70	Bale Thrower	12" x 81"	21003005
New Holland 72	Bale Thrower	12" x 71.5"	21003004
Massey Ferguson 333	Bale Thrower	12" x 64.5"	21003003
New Idea 7205, 7210, 7215	Bale Thrower	12" x 64.5"	21003003
Oliver 8	Cross Feed	25" x 147"	21003007
Oliver 100, HSX4074	Cross Feed	21.5" x 149"	21003006
Welger 444	Bale Thrower	11.75" x 82"	21003001

# Starter Flaps

Make & Model	Flaps per Baler	Belt Dimensions	3 ply 1/32 x 1/32	3 ply MRT
<b>Case-IH</b>				
8450 & 8455	4	3.5" x 46.22"	23501325	23501125-C
8460 & 8465	4	3.5" x 61.18"	23501335	23501124-C
RS451	4	3.5" x 43.31"	23501320	23501127-C
RS551 & RS561	4	3.5" x 58.50"	23501330	23501126-C
<b>Challenger</b>				
RB44, RB45, RB46	4	3.5" x 43.31"	23501320	23501127-C
RB46	4	3.5" x 58.50"	23501330	23501126-C
<b>Hesston</b>				
550 & 555	4	3.5" x 46.22"	23501325	23501125-C
560 & 565	4	3.5" x 61.18"	23501335	23501124-C
845 & 945	4	3.5" x 43.31"	23501320	23501127-C
855 & 955	4	3.5" x 58.50"	23501330	23501126-C
846 & 946	4	3.5" x 43.31"	23501320	23501127-C
856 & 956	4	3.5" x 58.50"	23501330	23501126-C
<b>Massey Ferguson</b>				
1550, 1560, 1565	4	3" x 43.63"	23501305	23501123-C
	4	3" x 58.63"	23501310	23501122-C
<b>New Idea</b>				
4664	4	3.5" x 46.22"	23501325	23501125-C
4665	4	3.5" x 61.18"	23501335	23501124-C
6345 & 6364	4	3.5" x 43.31"	23501320	23501127-C
6365 & 6465	4	3.5" x 58.50"	23501330	23501126-C
6445 & 6464	4	3.5" x 43.31"	23501320	3501127-C
<b>Vermeer</b>				
403-F & 403-G	4	3" x 32.63"	23501300	23501128-C
504-F, 504-G, 504-H	4	3" x 43.63"	23501305	23501123-C
605-F, 605-G, 605-H	4	3" x 58.63"	23501310	23501122-C

# Gathering Wheels

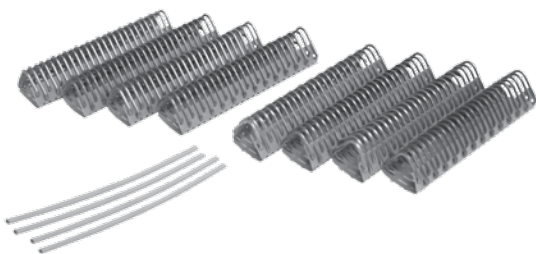
**Get Replacement Wheels from Apache, and get it all the first time around!**

- Our wheels work on either side of the baler.
- With proper storage and maintenance, wheels will last for years.
- Constructed from 1" thick neoprene rubber for rugged terrain travel.
- Pick up wet material simply by adjusting the angle of the wheel toward the baler.



Make/Model	Description	Part Number
<b>Case - IH</b>		
<b>8450 &amp; 8455</b>		
	24" x 9" Hub & Wheel	52100990
Replacement Wheel	24" x 9" Gathering Wheel	52100970
<b>Gehl</b>		
<b>1500, 1600, 1850, 1860</b>		
	28" x 12" Gathering Wheel	52101410
<b>Hesston</b>		
<b>530 &amp; 540</b>		
	24" x 9" Hub & Wheel	52100990
Replacement Wheel	24" x 9" Gathering Wheel	52100970
<b>550, 555, 560, 565</b>		
	Wheel Wedge (3 per wheel)	52500205
<b>5540 &amp; 5545</b>		
	Wheel Wedge (3 per wheel)	52500205
<b>5580 &amp; 5585</b>		
	Wheel Wedge (3 per wheel)	52500205
<b>745</b>		
	24" x 9" Gathering Wheel	52100970
<b>John Deere</b>		
<b>430, 435, 466, 467</b>		
	Wheel Wedge (3 per wheel)	52500205
<b>Massey Ferguson</b>		
<b>1560 &amp; 1745</b>		
	24" x 9" Gathering Wheel	52100970
<b>New Holland</b>		
<b>640, 648, 660, 688</b>		
	28" x 12" Gathering Wheel	52101410
<b>Vermeer</b>		
<b>504-I, 505-I, 504-SG, 504-M, 505-M</b>		
	24" x 9" Gathering Wheel	52100970
<b>604-J, 604-K, 604-L, 604-K</b>		
	24" x 9" Gathering Wheel	52100970
<b>605-J, 605-K, 605-L, 605-XL</b>		
	24" x 9" Gathering Wheel	52100970
<b>5400 Rebel, 5500 Rebel, 5410 Rebel</b>		
	24" x 9" Gathering Wheel	52100970
<b>504-M Classic &amp; 505-M Classic</b>		
	24" x 9" Gathering Wheel	52100970
<b>664 Rancher &amp; 665 Rancher</b>		
	24" x 9" Gathering Wheel	52100970
<b>504-G, 504-H, 504-I, 605-G, 605-H</b>		
	28" x 12" Gathering Wheel	52101410

# Accessories



Alligator® Fasteners

Description	Mfg. Item Number	Part Number
-------------	------------------	-------------

## Flexco Alligator Stainless Steel Rivet Fasteners

ARJ4/100	15000	25085380
ARJ6/150	14983	25085379
ARJ7/175	15001	25085381
ARJ10/250	15002	25085382
ARJ14/350	15003	25085383

## Flexco Replacement Hinge Pins

4" Corrugated-Steel Pins (9 Pins ea.)	14990	25085418
6" Corrugated-Steel Pins (8 Pins ea.)	14991	25085419
7" Corrugated-Steel Pins (8 Pins ea.)	14992	25085420
10" Corrugated-Steel Pins (4 Pins ea.)	14993	25085421
14" Corrugated-Steel Pins (4 Pins ea.)	14994	2508542

## Flexco Alligator Hand Applicator Tool

7" Installation Tool	15004	25085386-C
14" Installation Tool	15005	25085387

## Flexco Alligator Tool Kit

7" Tool Kit	15006	25085389
14" Tool Kit	15015	25085388

## Flexco Alligator Multiple Rivet Installation Tool

7" Multiple Rivet Tool	15025	25085413
14" Multiple Rivet Tool	15026	25085410

## Flexco Alligator Multiple Rivet Installation Tool Kit

7" Multiple Rivet Tool Kit	15032	25085412
14" Multiple Rivet Tool Kit	15033	25085414

## #4 1/2 Rectangular High Tensile Clipper Hooks

(8) 4" Cards Per Box	01831	91001745
(4) 6.5" Cards Per Box	01846	25048601
(4) 7" Cards Per Box	01847	25048602
(12) 12" Cards Per Box	02429	25048533

## #4 1/2 - 3 Rectangular High Tensile Clipper Hooks

(4) 7" Cards Per Box	01848	25092020
(12) 12" Cards Per Box	02432	25048537

## #4 1/2 - 4 Rectangular High Tensile Clipper Hooks

(4) 6.5" Cards Per Box	01846	25048601
------------------------	-------	----------

## #3-4 1/2 -Galvanized Clipper Hooks

(8) 4" Cards Per Box	01853	25048608
(4) 6.5" Cards Per Box	01854	25048609
(10) 10" Cards Per Box	02209	25048610

# Accessories

Description	Mfg. Item Number	Part Number
-------------	------------------	-------------

## Clipper Duralink Covered Cable 7/64" (.109") Per Ft.

(15ft) 7/64" Cable	02736	25050690
(25ft) 7/64" Cable	02736	25050690
(50ft) 7/64" Cable	02736	25050690
(75ft) 7/64" Cable	02736	25050690

## Clipper Smart Lock Kit

(5 ft. of Cable and 20 Locks)	03442	25050702
-------------------------------	-------	----------

## Clipper Vise Lacers

4" Vise Lacer	03018	25049500-C
7" Vise Lacer	04024	25049505-C
10" Vise Lacer	03020	25049590-C

## Clipper Lace Machine

7" Clipper Machine	03434	25050605
14" Clipper Machine	03435	25050606

## Clipper Microlacer

Clipper 14" Lacer w/o Face Strips	03368	25050618
Face Strips for 2-4 Clipper Lace	04024	25091943
Face Strips for #4.5-7 Clipper Lace	04029	25091925

## Clipper Belt Cutter

14" Belt Cutter	03230	25069770
14" Cutting Blade	03450	25069771
14" Nylon Block	03451	25069772

## Clipper Hand Tools

Rough-Top Belt Skiver	03239	25050705-C
Alligator Belt Grinder	30867	25091545
Alligator Hinge Pin Cutter	50004	25091420

## Flexco Alligator Ready Set Staple Lacing (RS125)

RS125J4NC (10 Sets per Box)	54513	25072090
RS125J10NC (4 Sets per Box)	54514	25072092
RS125J12NC (4 Sets per Box)	54515	25072094
RS125J14NC (4 Sets per Box)	54516	25072096
RS125J16NC (4 Sets per Box)	54517	25072098
RS125J18NC (4 Sets per Box)	54518	25072100
RS125J48NC (4 Sets per Box)	54524	25072112
RS125J60NC (4 Sets per Box)	54525	25072114

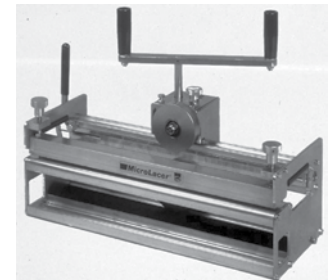
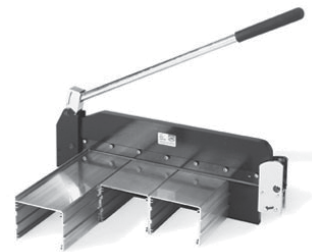
## Flexco Ready Set Installation Tools

RSC187-4	54627	25091312
RSC187-6	54628	25091314
RSC187-12	54629	25091316
RSC187-24	54631	25091318

\* For sizes no. 62, no. 125, and no. 187. Includes tool box and staple driver\*

## Hinge Pin Retaining Washers - 316SS

125 - RET - 50 (50 Pack)	50053	25011605
--------------------------	-------	----------



# Accessories



Description	Mfg. Item Number	Part Number
<b>Mato U20 John Deere Heavy Duty S/S Lacing</b>		

H24BS (7" Strips w/ Pin)	411156069	25200050
--------------------------	-----------	----------

<b>Corrugated S/S Pins (For John Deere 7" Belts)</b>		
--	--	--

6.5" Corrugated Steel Pins (8 ea.)	14992	25085420
------------------------------------	-------	----------

<b>Mato Installation Tools</b>		
--------------------------------	--	--

H20 Profi 7" Tool	411296961	25200032
-------------------	-----------	----------

H20 Profi 14" Tool	411296962	25200033
--------------------	-----------	----------

H20 Eco 7" Tool	411296963	25200030
-----------------	-----------	----------

H20 Eco 14" Tool	411296964	25200034
------------------	-----------	----------

<b>Mato Skiver and Accessories</b>		
------------------------------------	--	--

Mato Belt Skiver for Diamond Tread	411295827	25200015
------------------------------------	-----------	----------

Skiver Blades (5 Pack)	411295828	25200063
------------------------	-----------	----------

